

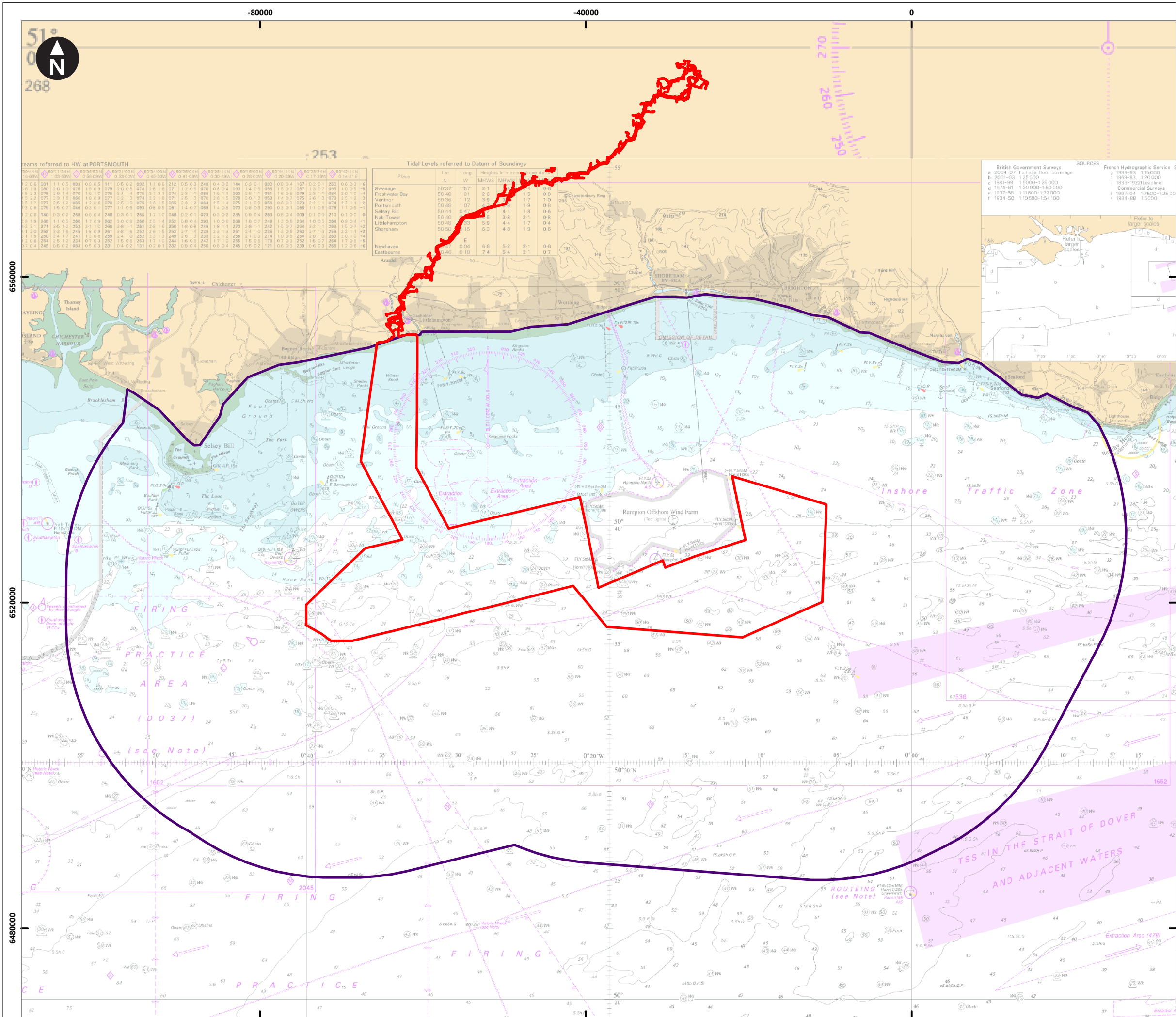
Volume 3, Chapter 13

Shipping and Navigation Figures



Contents

Figure 13.1	Study area for shipping and navigation
Figure 13.2	Overview of navigational features
Figure 13.3	Summer vessel traffic survey data within study area by vessel type
Figure 13.4	Winter vessel traffic survey data within study area by vessel type
Figure 13.5	Main commercial routes and 90 th percentiles within study area
Figure 13.6	MAIB incidents within study area by incident type
Figure 13.7	MDS layout for shipping and navigation
Figure 13.8	Post wind farm main commercial routes within study area



Service Layer Credits:
© Crown Copyright and/or database rights. Reproduced by permission of The Keeper of Public Records and the UK Hydrographic Office (www.GOV.uk/UKHO). License number 35725

Key

- PEIR Assessment Boundary
- Study area

0 2.5 5 10 15 20 Kilometres

1:450,000
WGS 1984 World Mercator Mercator

Rampion Extension Development

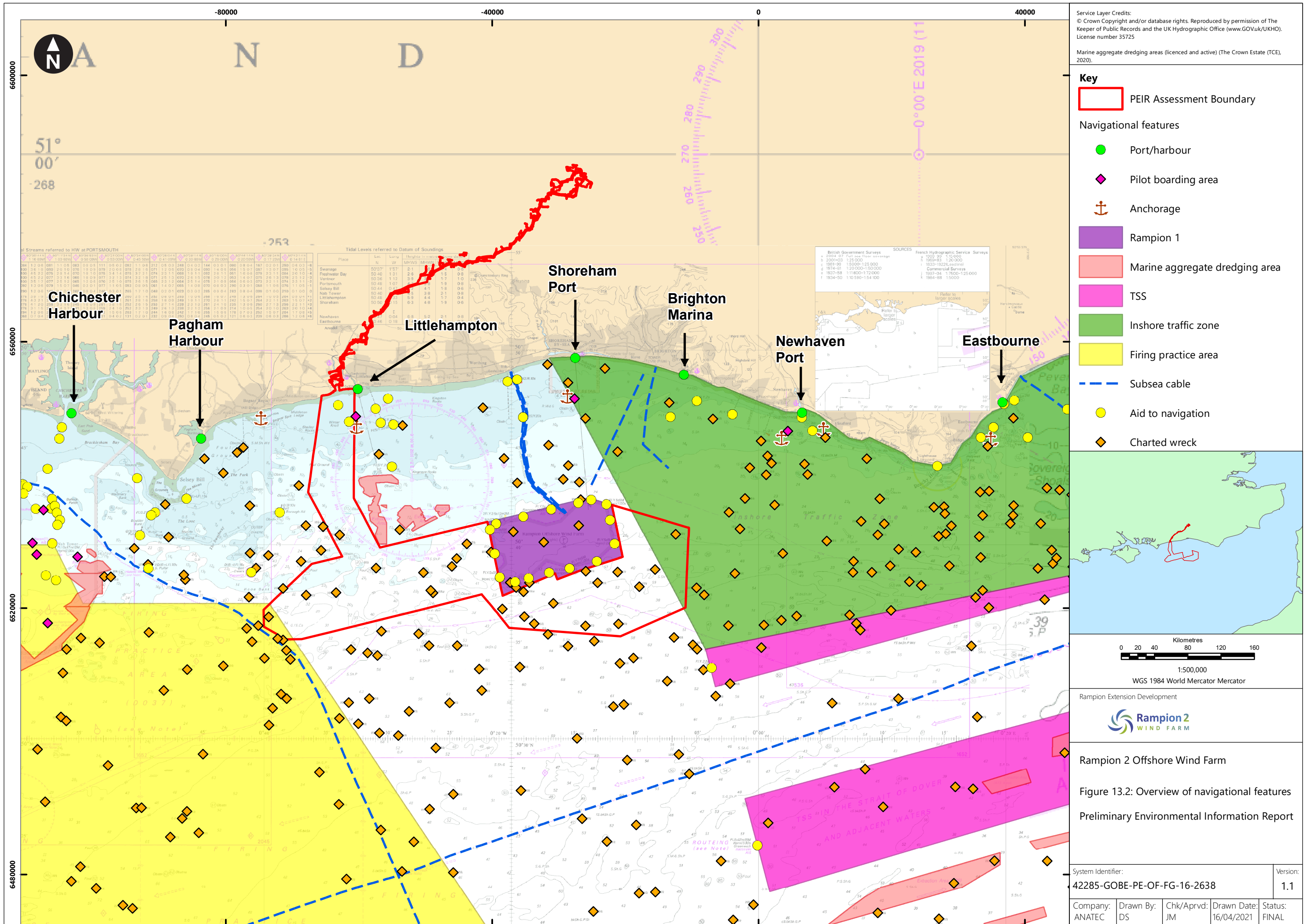
Rampion 2
WIND FARM

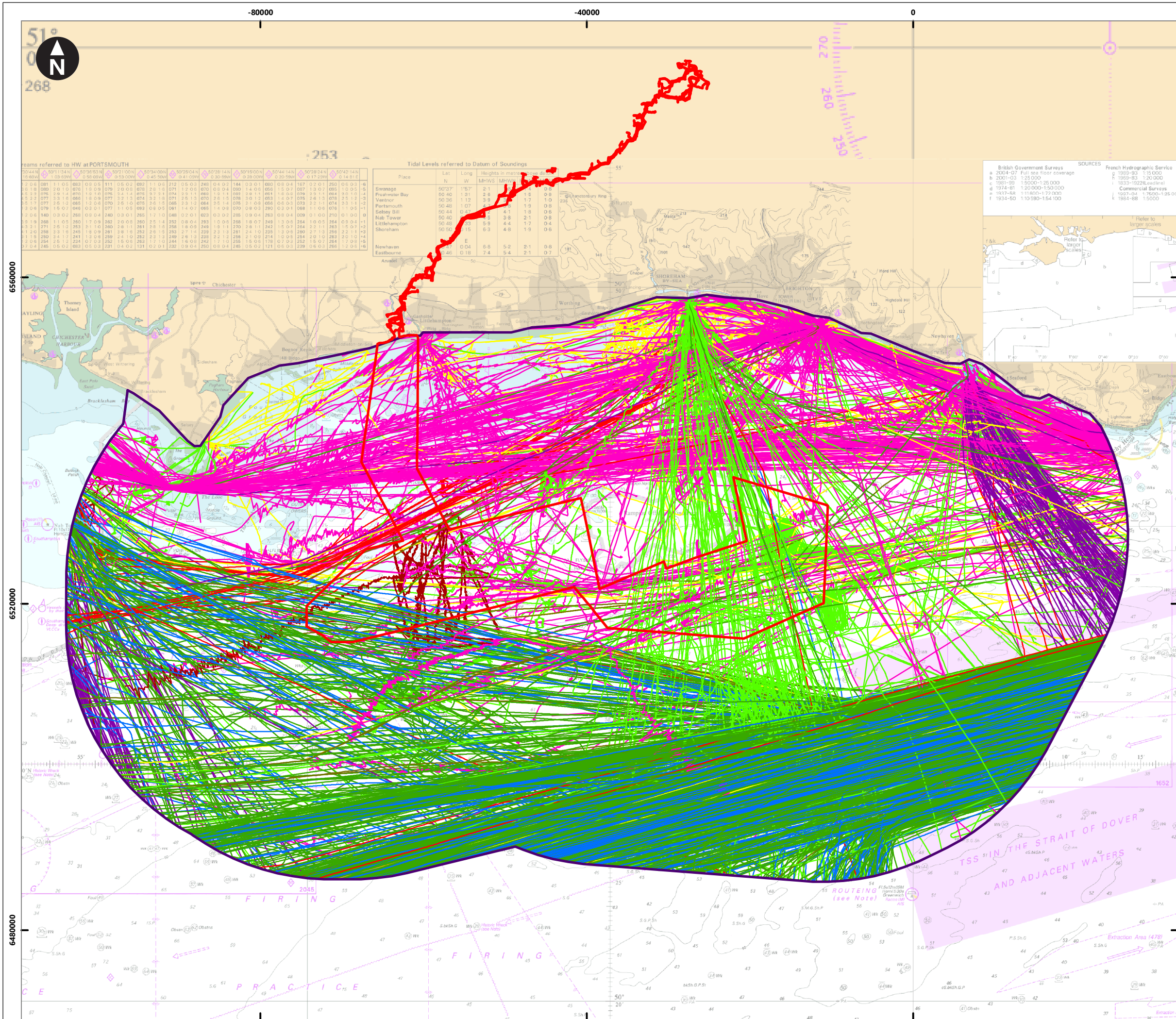
Rampion 2 Offshore Wind Farm

Figure 13.1: Study area for shipping and navigation

Preliminary Environmental Information Report

System Identifier: 42285-GOBE-PE-OF-FG-16-6745				Version: 1.1
Company: ANATEC	Drawn By: DS	Chk/Prvrd: JM	Drawn Date: 16/04/2021	Status: FINAL





Service Layer Credits:
© Crown Copyright and/or database rights. Reproduced by permission of The Keeper of Public Records and the UK Hydrographic Office (www.GOV.uk/UKHO). License number 35725

Key

PEIR Assessment Boundary

Study area

Vessel type

Unspecified

Fishing

Military

Dredger/subsea

Tug

Passenger

Cargo

Tanker

Other

Recreational

Oil and gas

Pilot

0 2.5 5 10 15 20
Kilometres

1:450,000
WGS 1984 World Mercator Mercator

Rampion Extension Development

Rampion 2
WIND FARM

Rampion 2 Offshore Wind Farm

Figure 13.3: Summer vessel traffic survey data within study area by vessel type

Preliminary Environmental Information Report

System Identifier:
42285-GOBE-PE-OF-FG-16-5614

Version:
1.1

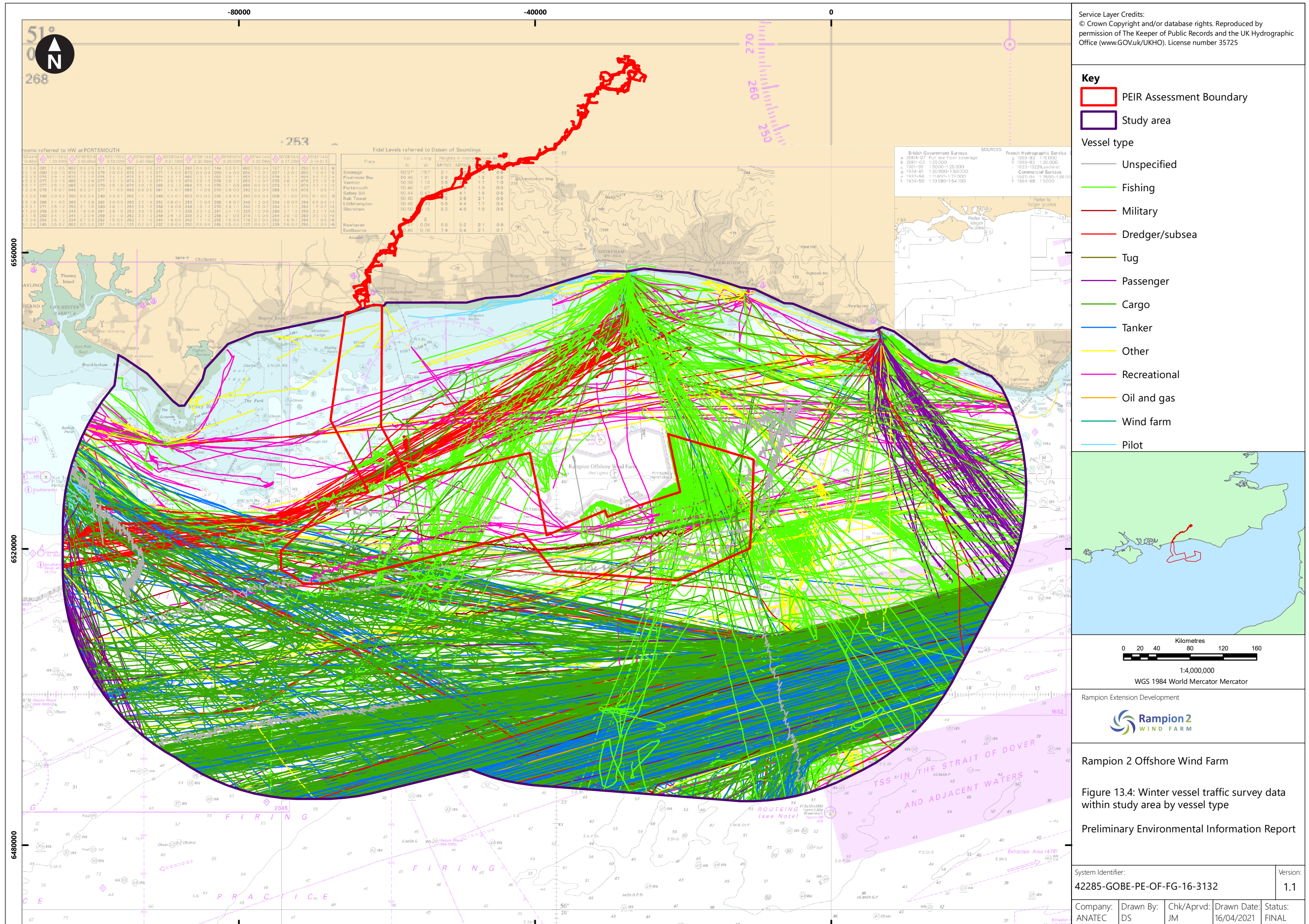
Company:
ANATEC

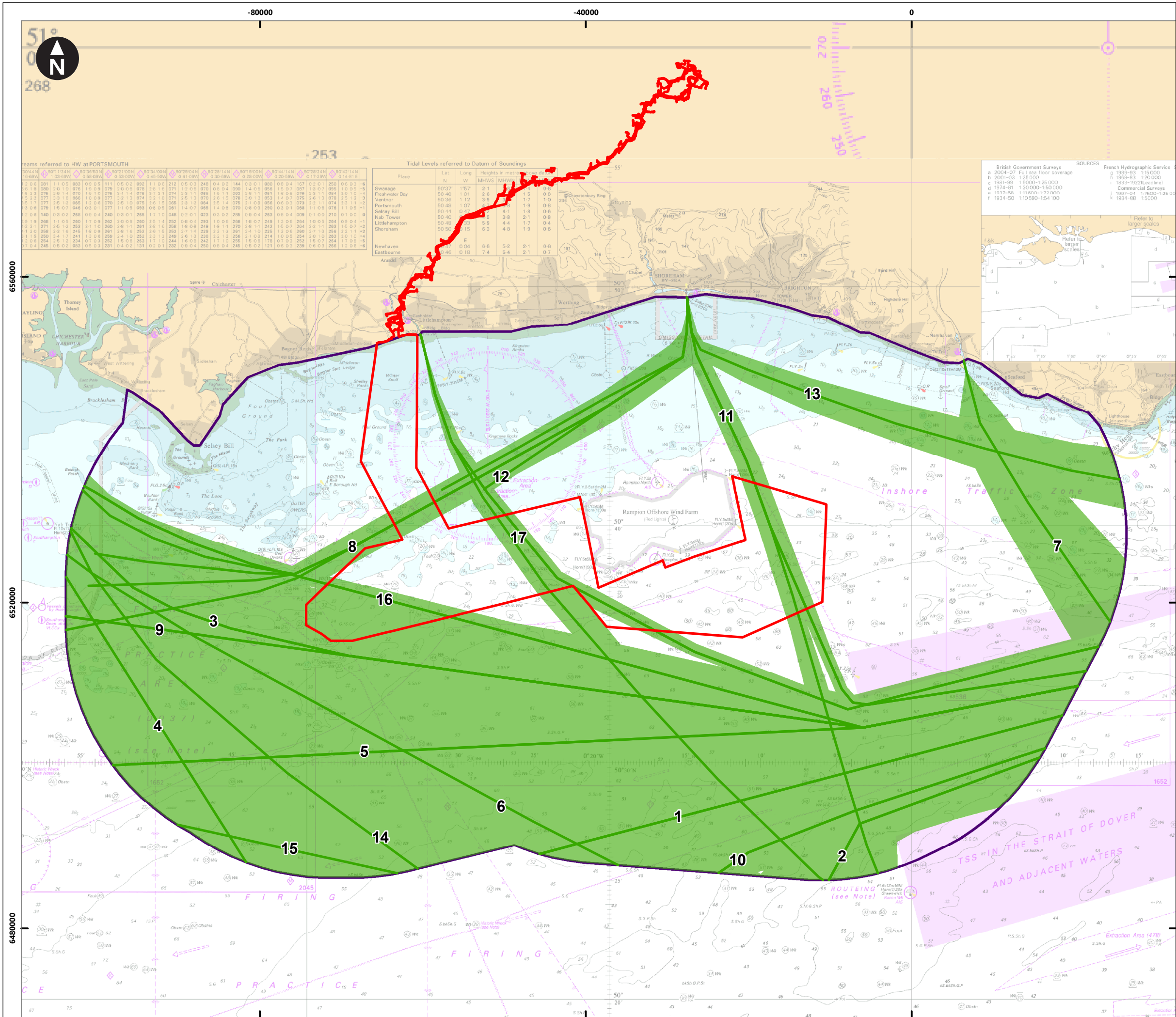
Drawn By:
DS

Chk/Prvrd:
JM

Drawn Date:
16/04/2021

Status:
FINAL





Service Layer Credits:
© Crown Copyright and/or database rights. Reproduced by permission of The Keeper of Public Records and the UK Hydrographic Office (www.GOV.uk/UKHO). License number 35725

Key

- PEIR Assessment Boundary
- Study area

Main routes
(Pre wind farm)

- Main position
- 90th percentile

0 2.5 5 10 15 20
Kilometres

1:450,000
WGS 1984 World Mercator Mercator

Rampion Extension Development

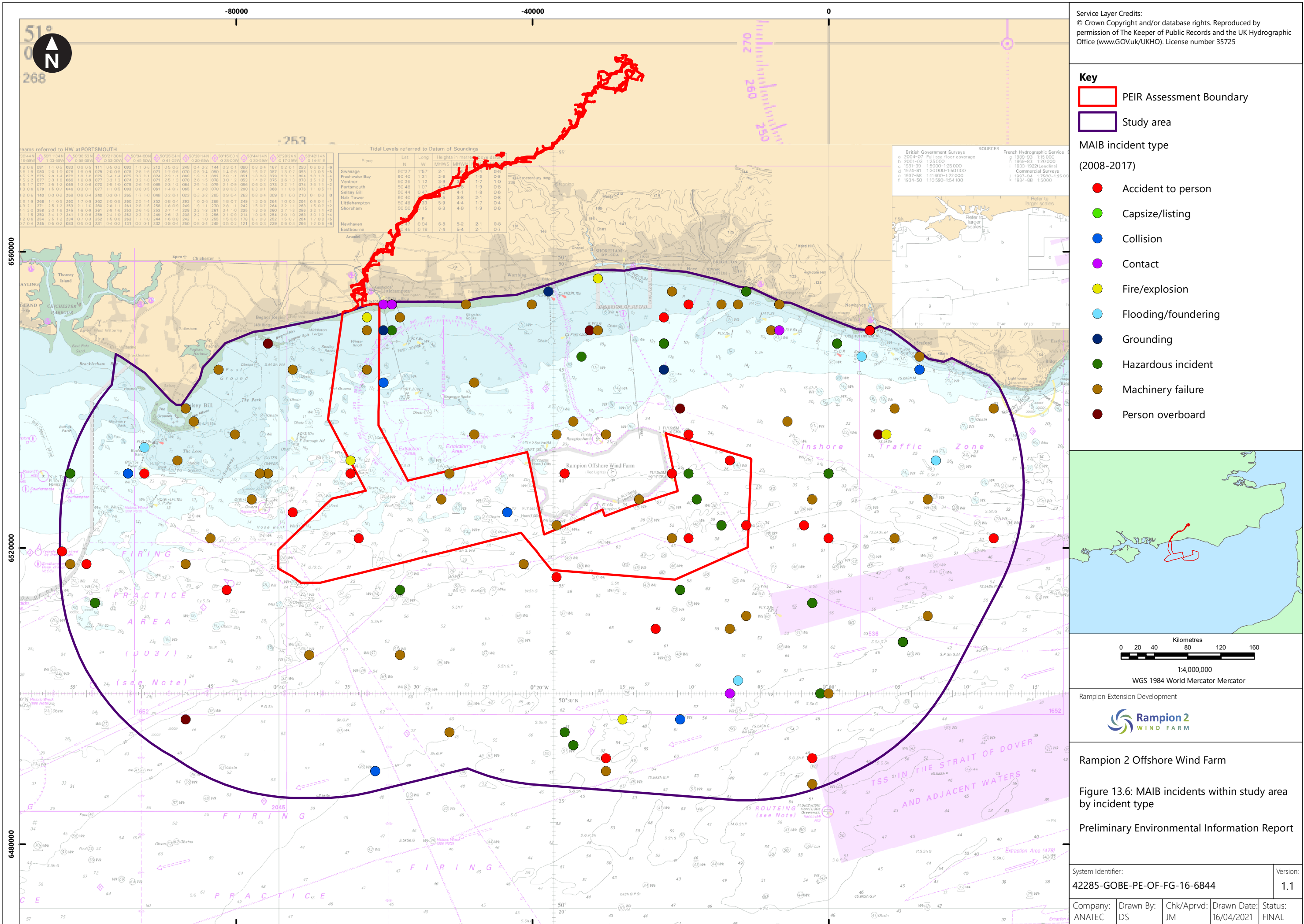
Rampion 2
WIND FARM

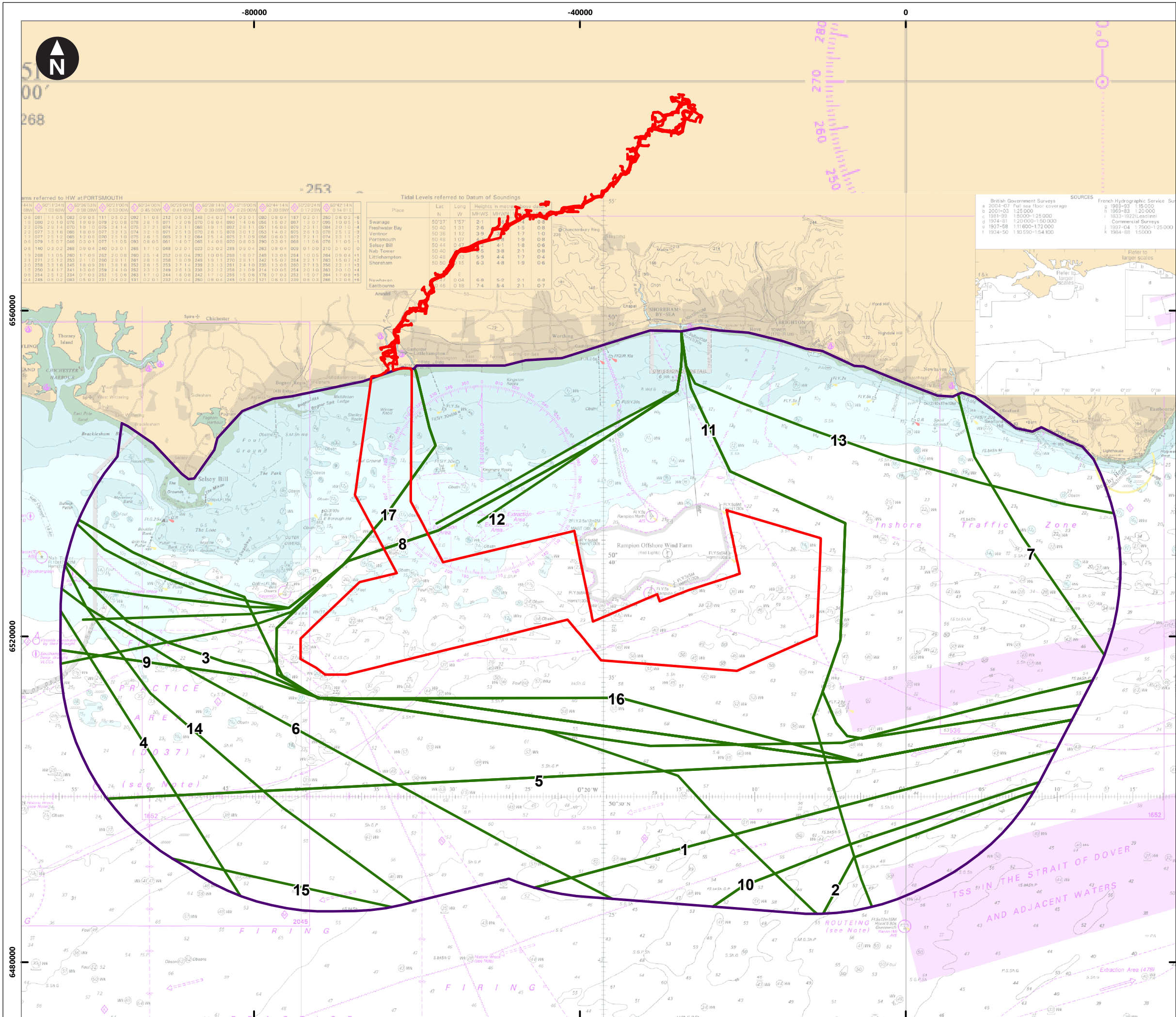
Rampion 2 Offshore Wind Farm

Figure 13.5: Main commercial routes and 90th percentiles within study area

Preliminary Environmental Information Report

System Identifier: 42285-GOBE-PE-OF-FG-16-3229				Version: 1.1
Company: ANATEC	Drawn By: DS	Chk/Prvd: JM	Drawn Date: 16/04/2021	Status: FINAL





Service Layer Credits:
© Crown Copyright and/or database rights. Reproduced by permission of The Keeper of Public Records and the UK Hydrographic Office (www.GOV.uk/UKHO). License number 35725

Key

- PEIR Assessment Boundary
- Study area
- Main routes
- (Post wind farm)
- Mean position

Scale: 0 20 40 80 120 160 Kilometres
1:4,000,000
WGS 1984 World Mercator Mercator

Rampion Extension Development

Rampion 2
WIND FARM

Rampion 2 Offshore Wind Farm

Figure 13.8: Post wind farm main commercial routes within study area

Preliminary Environmental Information Report

System Identifier: 42285-GOBE-PE-OF-FG-16-5870

Version: 1.1

Company:	Drawn By:	Chk/Aprvd:	Drawn Date:	Status:
ANATEC	DS	JM	16/04/2021	FINAL