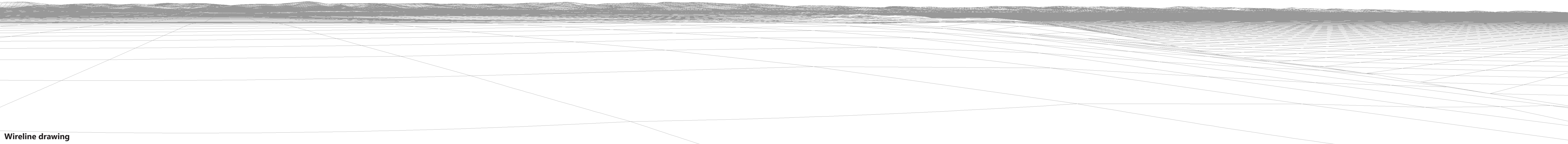




Baseline photograph

This image provides landscape and visual context only

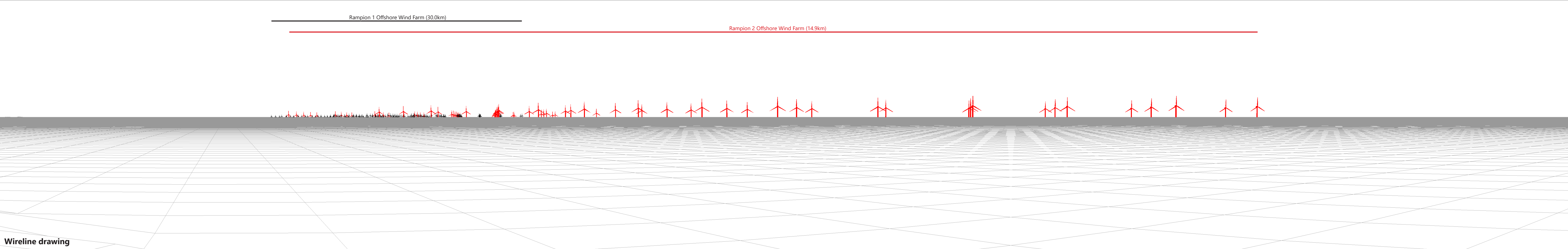


Wireline drawing



Baseline photograph

This image provides landscape and visual context only



Wireline drawing



Location grid reference: 486244 E 92786 N

Direction of view: 122°

Horizontal field of view: 63.5° (planar projection)

Distance: 14.9km

Paper size: 1027.7 x 297mm

Corrected print image size: 1006.7 x 260mm

Principal distance: 812.5mm

Camera: Canon EOS 6D

Lens: 50mm (Canon EF 50mm f/1.4)

Camera height: 1.5m AGL

Date and time: 06/09/2020 15:00

Development Parameters:

Rampion Offshore Wind Farm: 116 turbines at 140m blade tip height

Rampion 2 Offshore Wind Farm: 75 turbines at 325m blade tip height

Notes:


- Figure produced to accord with the Landscape Institute's Technical Guidance Note 6/19: Visual Representation of Development Proposals.

- © Crown copyright and database rights 2020 Ordnance Survey 0100031673.

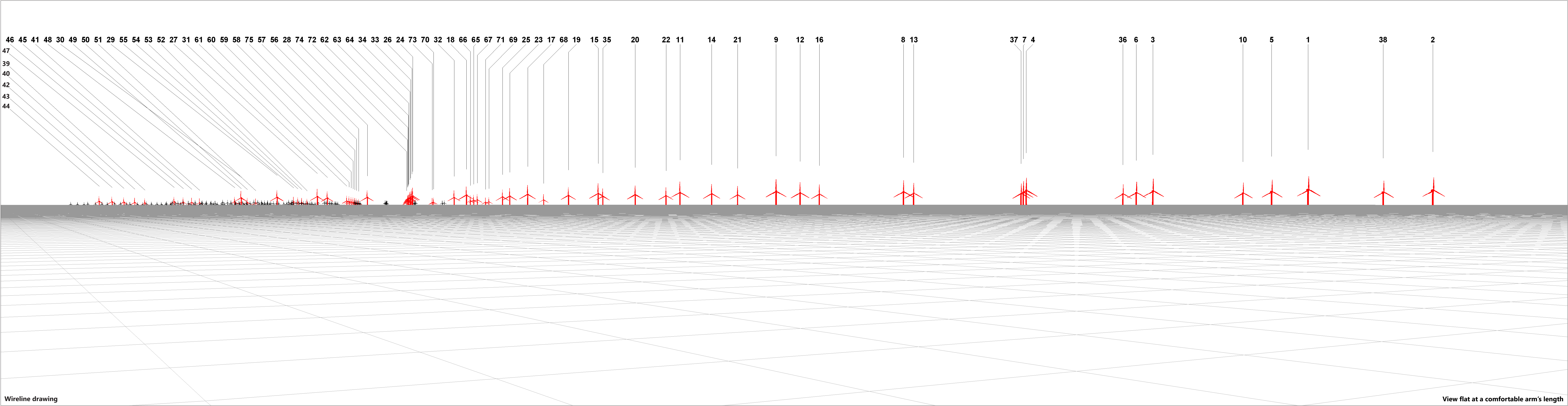
- 100% Enlargement

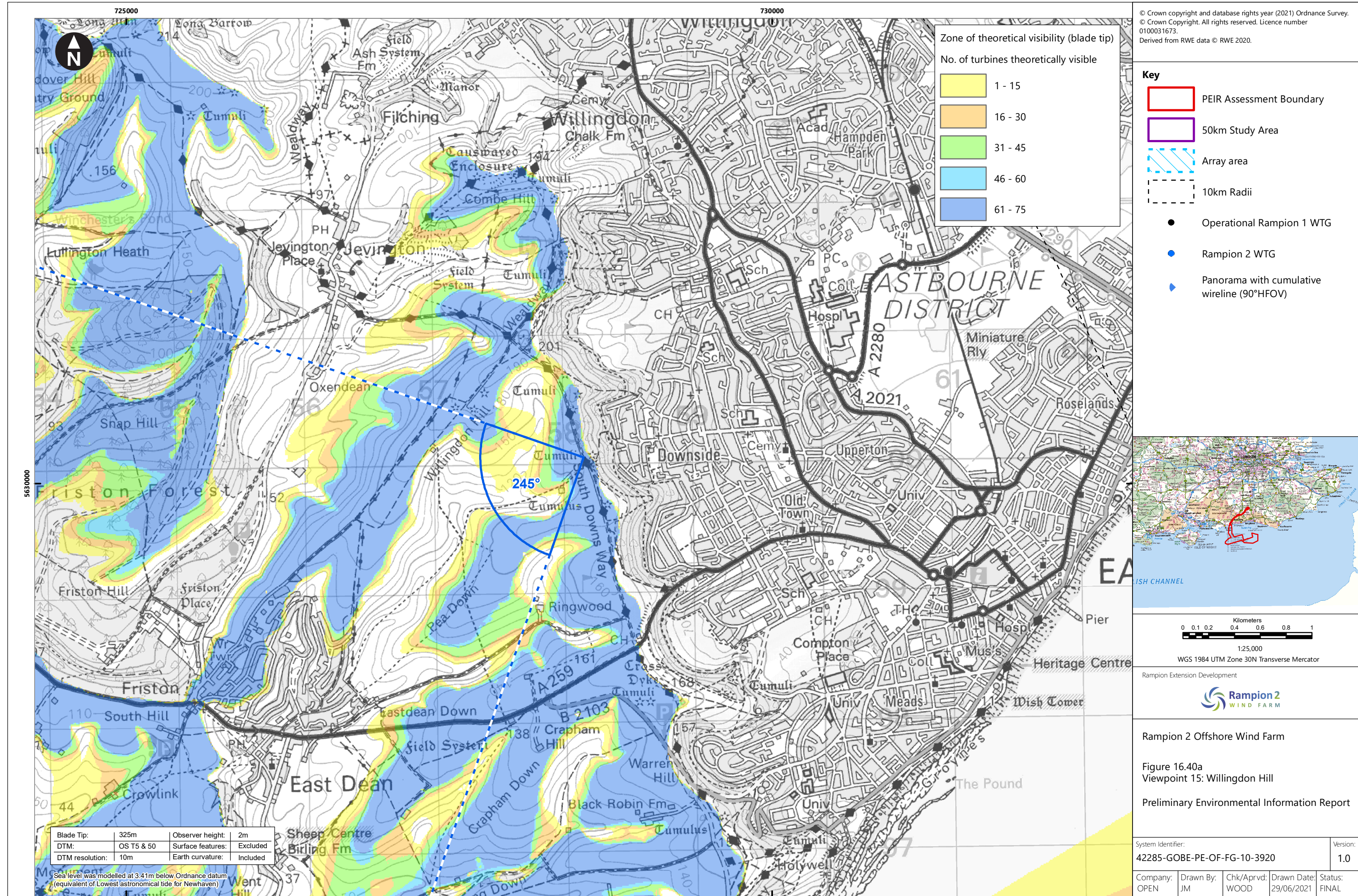
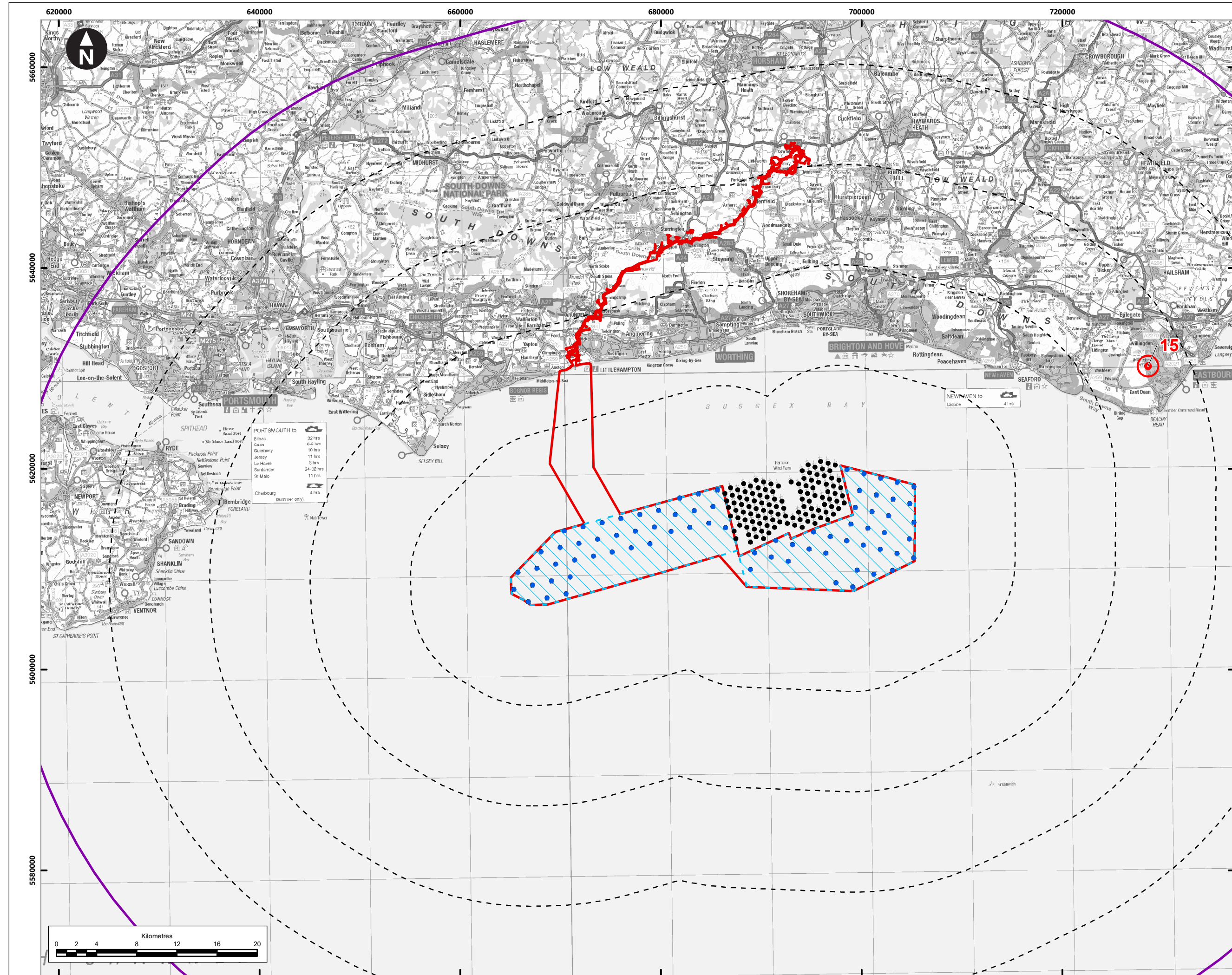
- TYPE 4 VISUALISATION

Company:	OPEN	Drawn date:	25/06/2021
Drawn by:	TH	Status:	FINAL
Chk/Aprvd:	SM	File:	191397_RMP2_SLVIA_PEIR_VP_v5





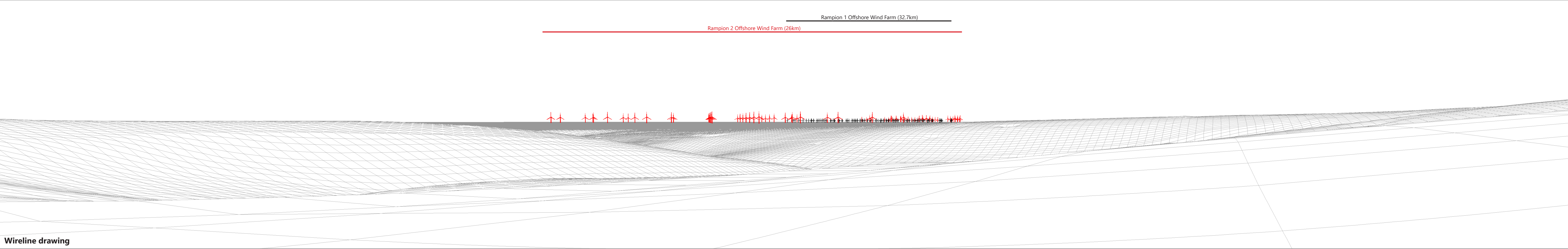




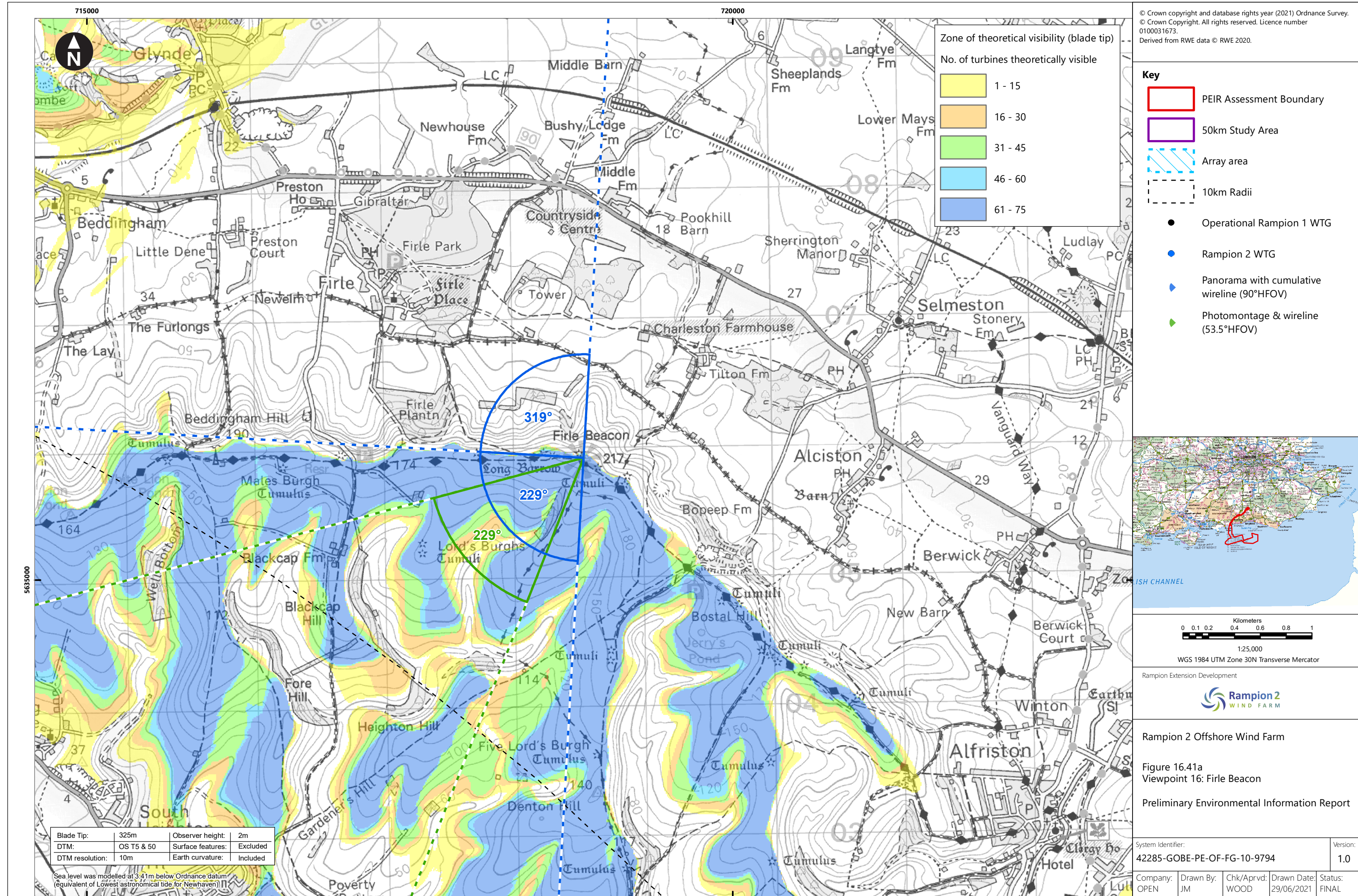
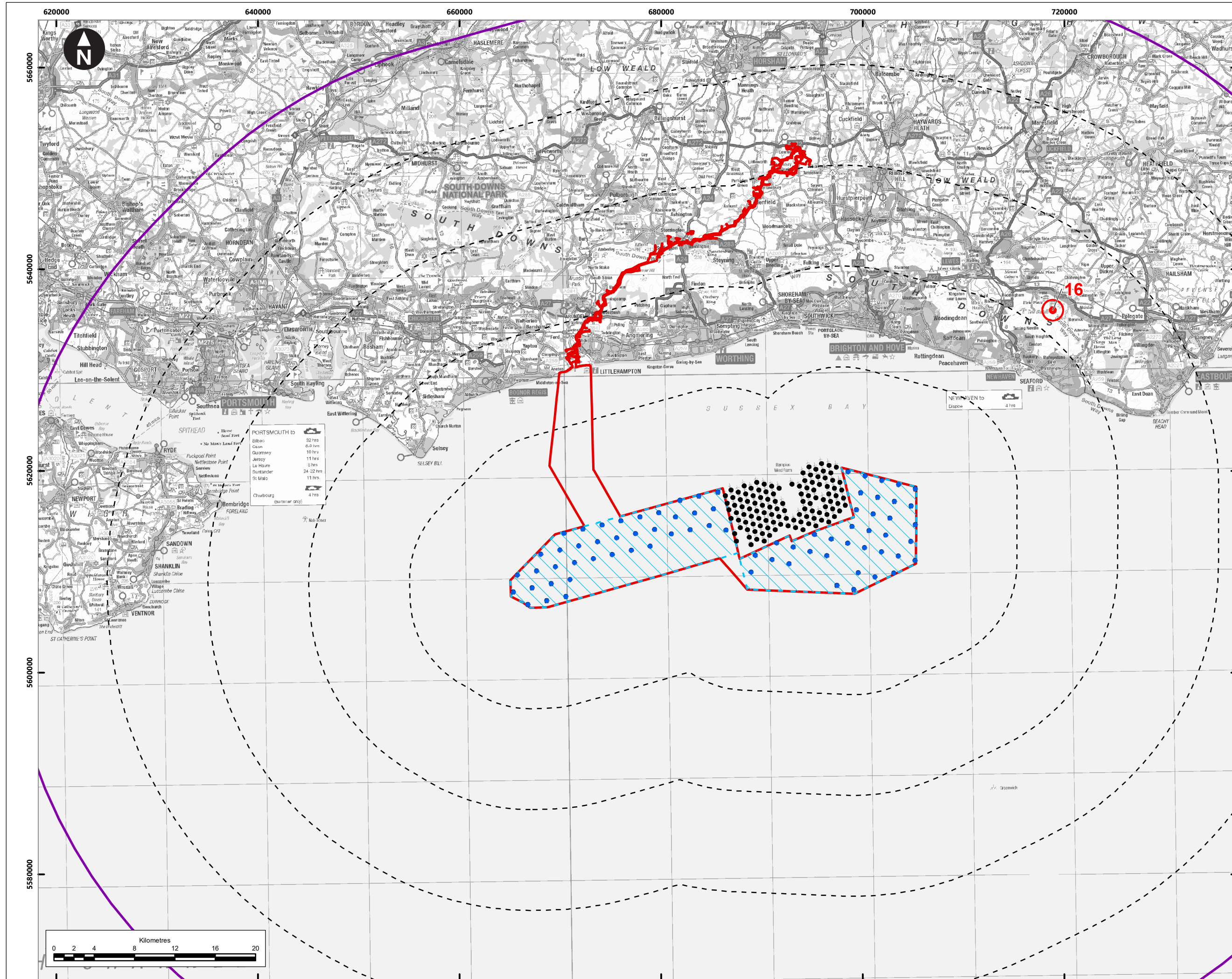


Baseline photograph

This image provides landscape and visual context only



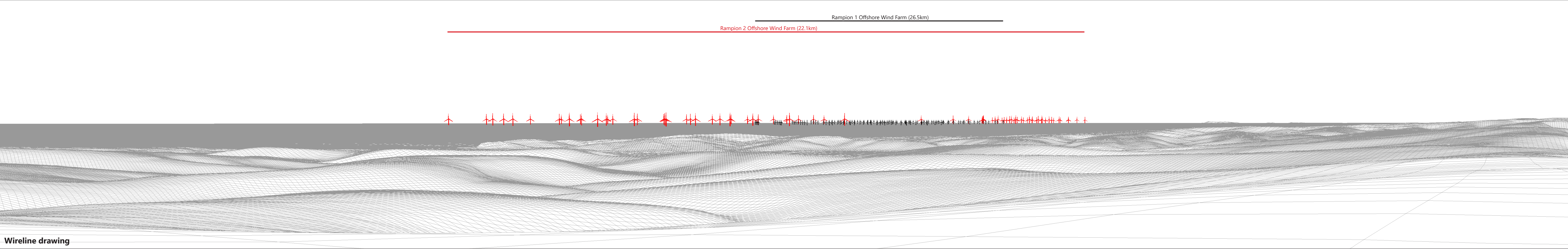
Wireline drawing





Baseline photograph

This image provides landscape and visual context only



Wireline drawing

Location grid reference: 548542 E 105923 N
Direction of view: 229°
Horizontal field of view: 90° (cylindrical projection)
Distance: 22.1km

Paper size: 841mm x 297mm (half A1)
Corrected print image size: 820mm x 130mm
Principal distance: 522mm

Camera: Canon EOS 6D
Lens: 50mm (Canon EF 50mm f/1.4)
Camera height: 1.5m AGL
Date and time: 26/08/2020 09:15

Development Parameters:
Rampion Offshore Wind Farm: 116 turbines at 140m blade tip height
Rampion 2 Offshore Wind Farm: 75 turbines at 325m blade tip height

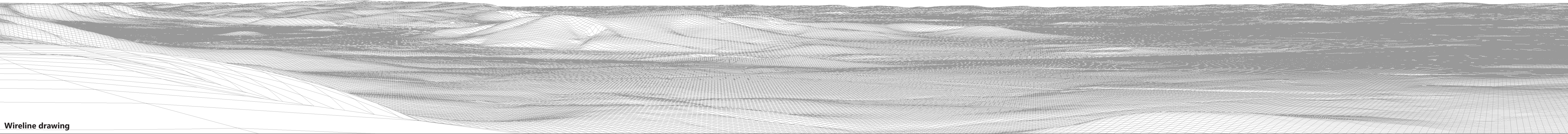
Notes:
- Figure produced to accord with the Landscape Institute's Technical Guidance Note 6/19: Visual Representation of Development Proposals.
- © Crown copyright and database rights 2020 Ordnance Survey 0100031673.
- 100% Enlargement
- TYPE 4 VISUALISATION

Company:	OPEN	Drawn date:	25/06/2021	
Drawn by:	TH	Status:	FINAL	
Chk/Aprvd:	SM	File:	191397_RMP2_SLVIA_PEIR_VP_v5	



Baseline photograph

This image provides landscape and visual context only



Wireline drawing





Photomontage: Proposed Development

View flat at a comfortable arm's length

