

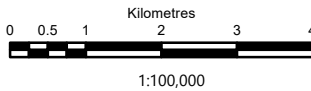
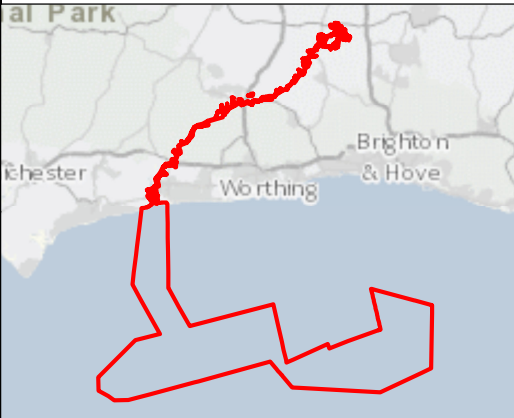
© Crown Copyright. All rights reserved. Licence number AL100001776.

Key

- PEIR Assessment Boundary
- Onshore substation search areas
- Lines indicating the distance from the centre of the PEIR Assessment Boundary
- Landscape and Visual Study Area
- County council administrative boundaries
- Local authority district administrative boundaries
- Areas of Outstanding Natural Beauty - High Weald
- South Downs National Park

Topography

- 238m AOD and above
- 0m AOD
- AOD: Above Ordnance Datum



Rampion Extension Development

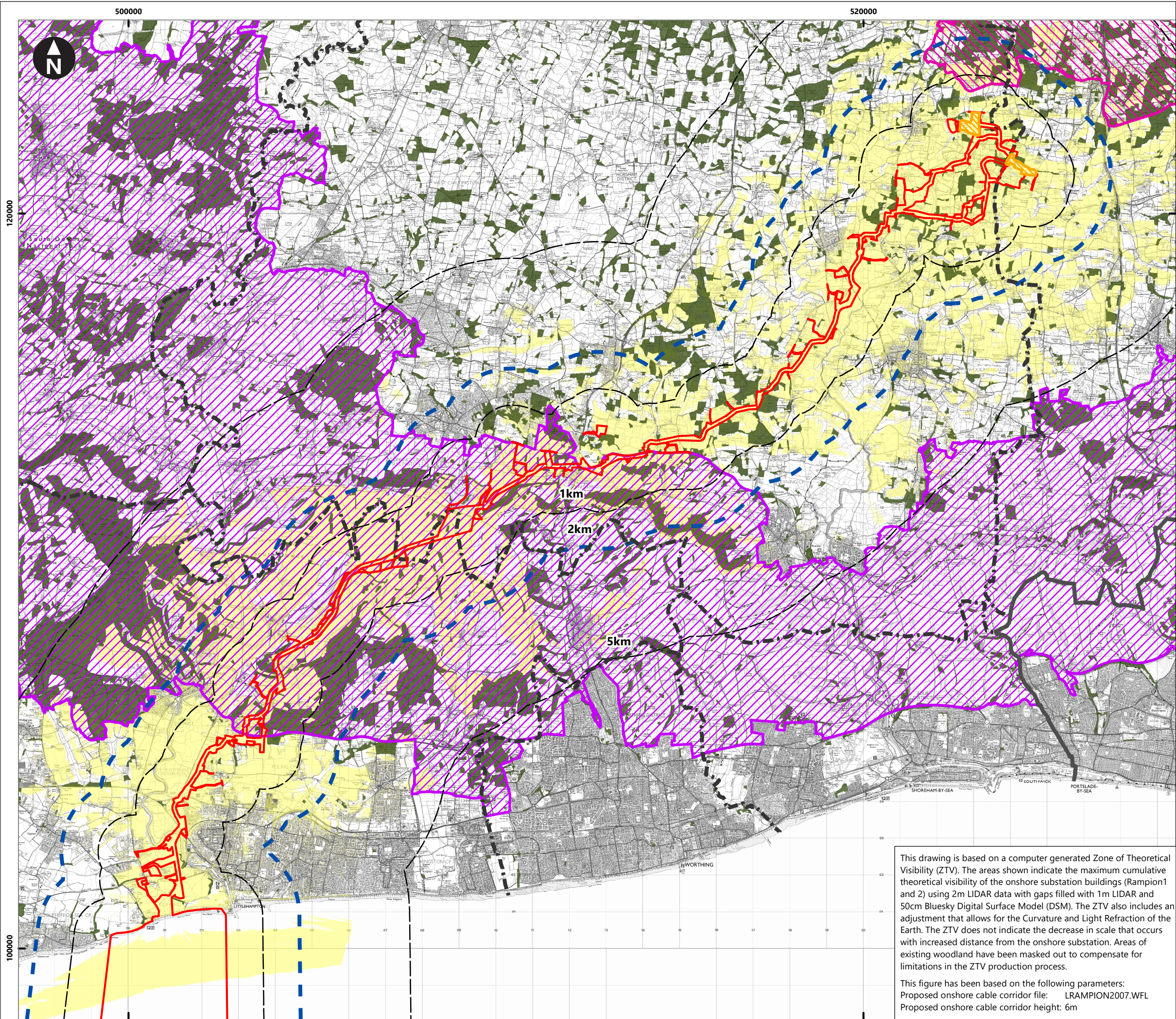


Rampion 2 Offshore Wind Farm

Figure 19.6a: Landscape Designations

Preliminary Environmental Information Report

System Identifier: 42285-WOOD-PE-ON-FG-OL-0002				Version: 1.0
Company: Wood	Drawn By: BRYCC	Chk/Aprvd: WOOD	Drawn Date: 10/06/2021	Status: FINAL

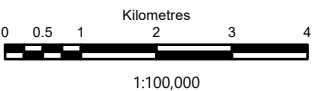
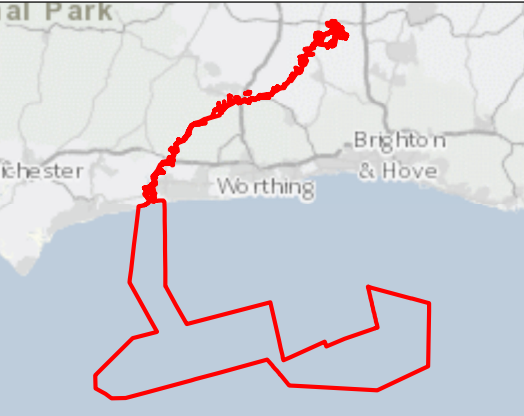


© Crown Copyright. All rights reserved. Licence number AL100001776.

Key

- PEIR Assessment Boundary
- Onshore substation search areas
- Lines indicating the distance from the centre of the PEIR Assessment Boundary
- Landscape and Visual Study Area
- County council administrative boundaries
- Local authority district administrative boundaries
- Areas of Outstanding Natural Beauty - High Weald
- South Downs National Park
- Existing Woodland

Areas where construction works associated with the onshore cable corridor, including temporary construction compounds may be theoretically visible. The visibility of the onshore cable corridor and temporary construction compounds are limited to the construction phase only



Rampion Extension Development

Rampion 2 Offshore Wind Farm

Figure 19.6b: Landscape Designations with ZTV

Preliminary Environmental Information Report

This drawing is based on a computer generated Zone of Theoretical Visibility (ZTV). The areas shown indicate the maximum cumulative theoretical visibility of the onshore substation buildings (Rampion1 and 2) using 2m LIDAR data with gaps filled with 1m LIDAR and 50cm Bluesky Digital Surface Model (DSM). The ZTV also includes an adjustment that allows for the Curvature and Light Refraction of the Earth. The ZTV does not indicate the decrease in scale that occurs with increased distance from the onshore substation. Areas of existing woodland have been masked out to compensate for limitations in the ZTV production process.

This figure has been based on the following parameters:
Proposed onshore cable corridor file: LRAMPION2007.WFL
Proposed onshore cable corridor height: 6m

System Identifier: 42285-WOOD-PE-ON-FG-OL-0003				Version: 1.0
Company: Wood	Drawn By: BRYCC	Chk/Aprvd: WOOD	Drawn Date: 15/06/2021	Status: FINAL