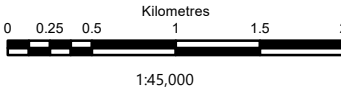
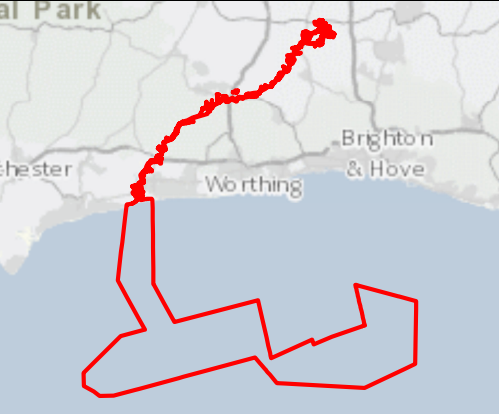


Key

- PEIR Assessment Boundary
- Temporary construction compounds
- Landscape and Visual Study Area
- Lines indicating the distance from the centre of the PEIR
- Assessment Boundary
- South Downs National Park
- Local authority district administrative boundaries
- South Downs Way National Trail
- Sustrans Cycle Routes
- A Road
- B Road
- Railways

Areas where construction works associated with the onshore cable corridor, including temporary construction compounds may be theoretically visible. The visibility of the onshore cable corridor and temporary construction compounds are limited to the construction phase only



- Local Roads**
- iv) Crossbush Lane
 - v) Clay Lane
 - vi) Blackhurst Lane
 - vii) Peppering Lane
 - viii) Local Burpham Roads
 - ix) Water Lanex
 - x) Spithandle Lane
- Ancient Woodlands (publicly accessible)**
- 1) Angmering Park Estate Trust
 - 2) The Warrens
- South Downs Known Landmarks and Views**
- A) Chanctonbury Ring
 - B) Amberley Mount
 - C) Cissbury Ring
 - D) Highdown Hill
 - E) Chantry Hill
 - F) Sullington Hill
 - G) Long Furlong
 - H) Perry Hill
 - I) Barpham Hill

- Settlements**
- Other key visitor / tourist destinations
 - ix) Washington Caravan Park
- Other promoted routes (within 2km):**
- Arun Way
 - Monarch Way

This drawing is based on a computer generated Zone of Theoretical Visibility (ZTV). The areas shown indicate the maximum theoretical visibility of the onshore cable corridor and temporary construction compounds using 2m LIDAR data with gaps filled with 1m LIDAR and 50cm Blue sky Digital Surface Model (DSM). The ZTV also includes an adjustment that allows for the Curvature and Light Refraction of the Earth. The ZTV does not indicate the decrease in scale that occurs with increased distance from the onshore cable corridor. Areas of existing woodland have been masked out to compensate for limitations in the ZTV production process.

This figure has been based on the following parameters:
Proposed onshore cable corridor file: LRAMPION2007.WFL
Proposed onshore cable corridor height: 6m

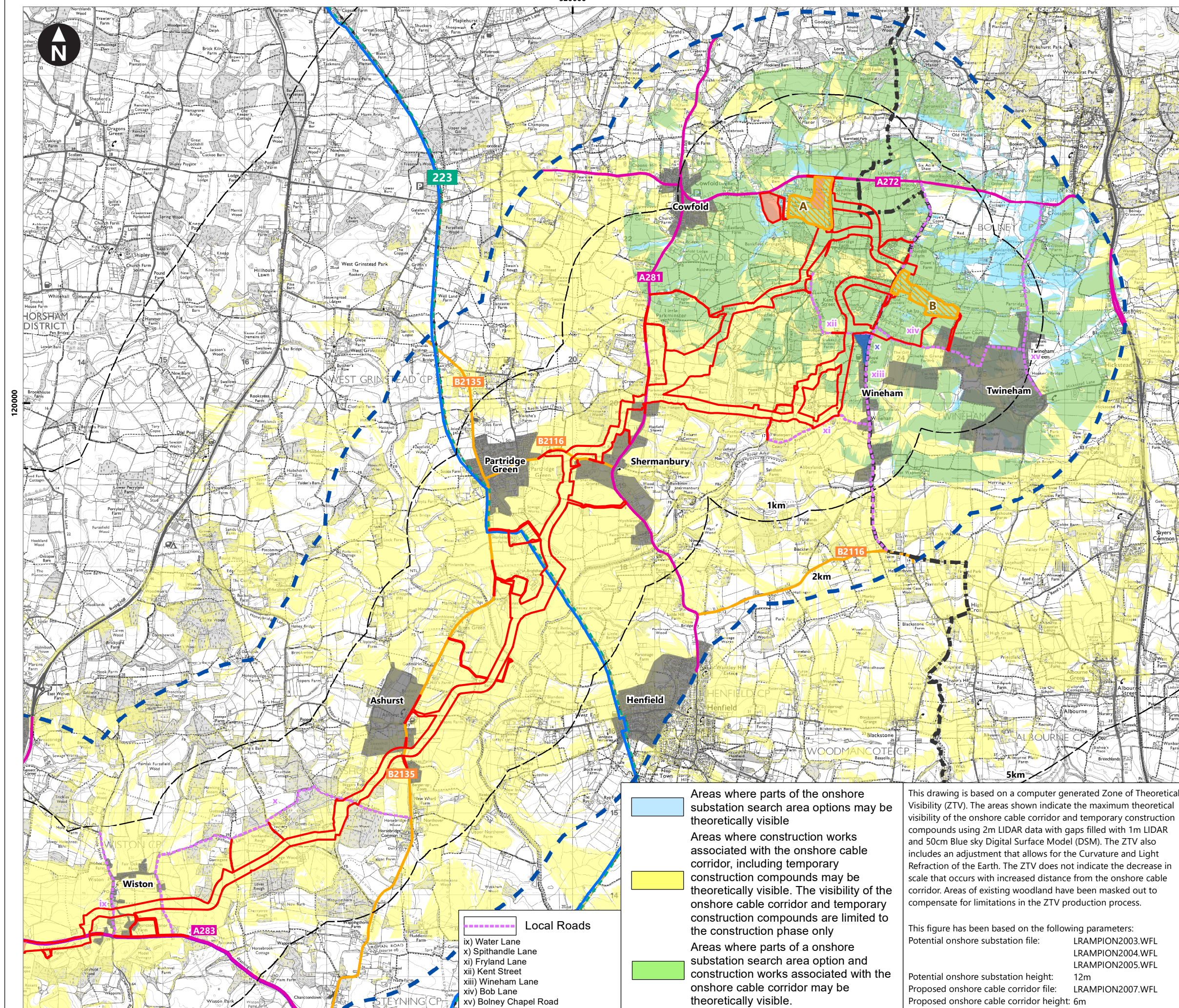
Rampion Extension Development

Rampion 2 Offshore Wind Farm

19.7aii – Visual Receptors: Part 2 - Warningscamp to Wiston

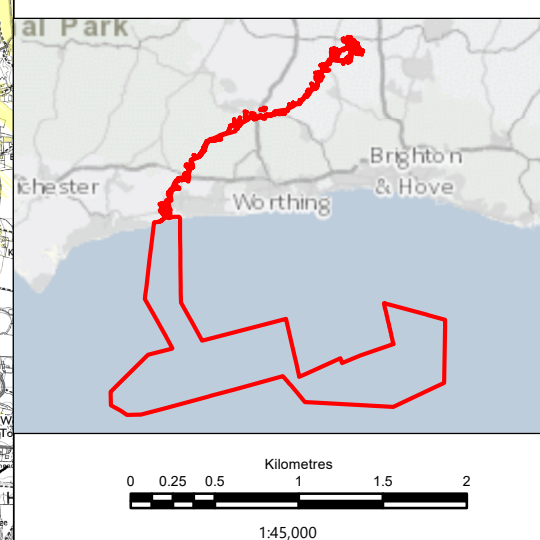
Preliminary Environmental Information Report

System Identifier: 42285-WOOD-PE-CC-FG-O-0005		Version: 1.0		
Company: Wood	Drawn By: BRYCC	Chk/Prvrd: WOOD	Drawn Date: 25/06/2021	Status: FINAL



Key

- PEIR Assessment Boundary
- Onshore substation search areas
- Temporary construction compounds
- Landscape and Visual Study Area
- Lines indicating the distance from the centre of the PEIR Assessment Boundary
- Local authority district administrative boundaries
- South Downs National Park
- Sustrans Cycle Routes
- A Road
- B Road
- Settlements
- Other key visitor / tourist destinations
- x) Wineham Lane Caravan Park
- South Downs Link



Areas where parts of the onshore substation search area options may be theoretically visible

Areas where construction works associated with the onshore cable corridor, including temporary construction compounds may be theoretically visible. The visibility of the onshore cable corridor and temporary construction compounds are limited to the construction phase only

Areas where parts of an onshore substation search area option and construction works associated with the onshore cable corridor may be theoretically visible.

This drawing is based on a computer generated Zone of Theoretical Visibility (ZTV). The areas shown indicate the maximum theoretical visibility of the onshore cable corridor and temporary construction compounds using 2m LIDAR data with gaps filled with 1m LIDAR and 50cm Blue sky Digital Surface Model (DSM). The ZTV also includes an adjustment that allows for the Curvature and Light Refraction of the Earth. The ZTV does not indicate the decrease in scale that occurs with increased distance from the onshore cable corridor. Areas of existing woodland have been masked out to compensate for limitations in the ZTV production process.

This figure has been based on the following parameters:

Potential onshore substation file:	LRAMPION2003.WFL
Potential onshore substation height:	LRAMPION2004.WFL
Proposed onshore cable corridor file:	LRAMPION2005.WFL
Proposed onshore cable corridor height:	12m
	6m

Rampion Extension Development

Rampion 2
WIND FARM

Rampion 2 Offshore Wind Farm

Figure 19.7aiii - Visual Receptors: Part 3 - Wiston to Bolney

Preliminary Environmental Information Report

System Identifier:	42285-WOOD-SC-ON-FG-OL-0006	Version:	1.0						
Company:	Wood	Drawn By:	BRVCC	Chk/Prvrd:	WOOD	Drawn Date:	25/06/2021	Status:	FINAL