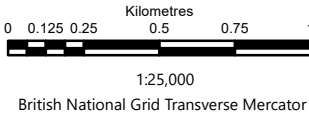
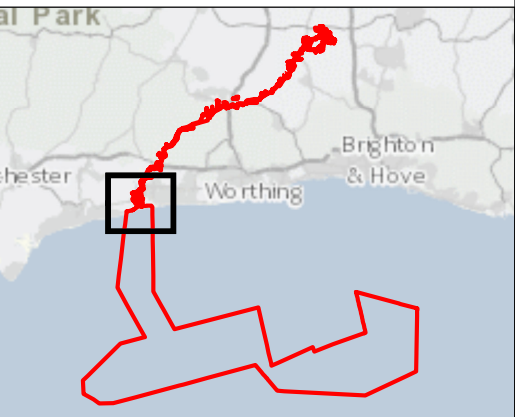


© Crown Copyright. All rights reserved. Licence number AL100001776.

- Key**
- PEIR Assessment Boundary
 - Landscape and Visual Study Area
 - Lines indicating the distance from the centre of the PEIR Assessment Boundary
 - Local authority district administrative boundaries
 - Footpath
 - Bridleway
 - Byway
 - Scoped Out Footpath
 - Scoped Out Bridleway
 - Scoped Out Byway
 - Open Access Land



Rampion Extension Development

Rampion 2
WIND FARM

Rampion 2 Offshore Wind Farm

Figure 19.7bi – PROW and Open Space:
Part 1

Preliminary Environmental Information Report

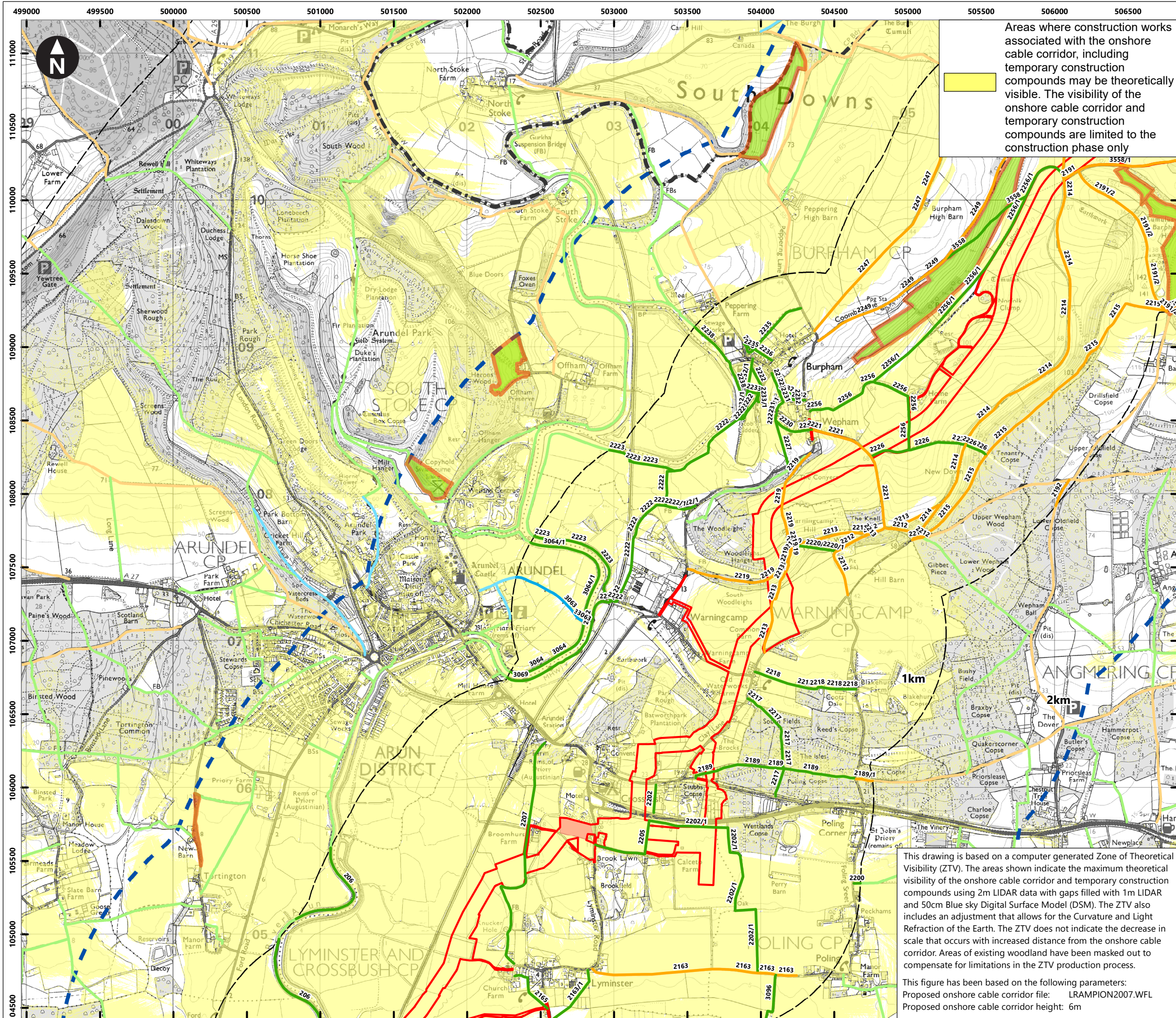
System Identifier:
42285-WOOD-PE-ON-FG-OL-7010

Version:
1.0

Company: Wood	Drawn By: BRYCC	Chk/Prvd: SINHR	Drawn Date: 17/06/2021	Status: FINAL
------------------	--------------------	--------------------	---------------------------	------------------

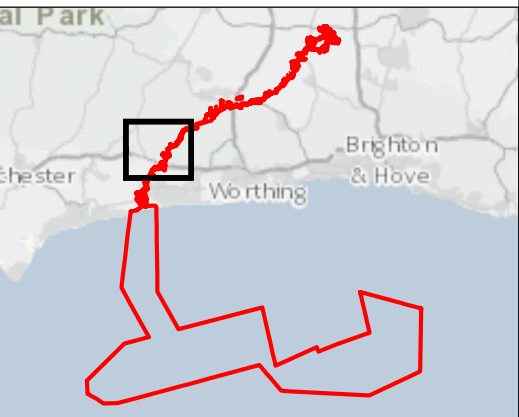
This drawing is based on a computer generated Zone of Theoretical Visibility (ZTV). The areas shown indicate the maximum theoretical visibility of the onshore cable corridor and temporary construction compounds using 2m LIDAR data with gaps filled with 1m LIDAR and 50cm Blue sky Digital Surface Model (DSM). The ZTV also includes an adjustment that allows for the Curvature and Light Refraction of the Earth. The ZTV does not indicate the decrease in scale that occurs with increased distance from the onshore cable corridor. Areas of existing woodland have been masked out to compensate for limitations in the ZTV production process.

This figure has been based on the following parameters:
Proposed onshore cable corridor file: LRAMPION2007.WFL
Proposed onshore cable corridor height: 6m



© Crown Copyright. All rights reserved. Licence number AL100001776.

- Key**
- PEIR Assessment Boundary
 - Landscape and Visual Study Area
 - Lines indicating the distance from the centre of the PEIR Assessment Boundary
 - Local authority district administrative boundaries
 - Footpath
 - Bridleway
 - Restricted Byway
 - Scoped Out Footpath
 - Scoped Out Bridleway
 - Scoped Out Restricted Byway
 - Open Access Land



0 0.125 0.25 0.5 0.75 1
Kilometres
1:25,000
British National Grid Transverse Mercator

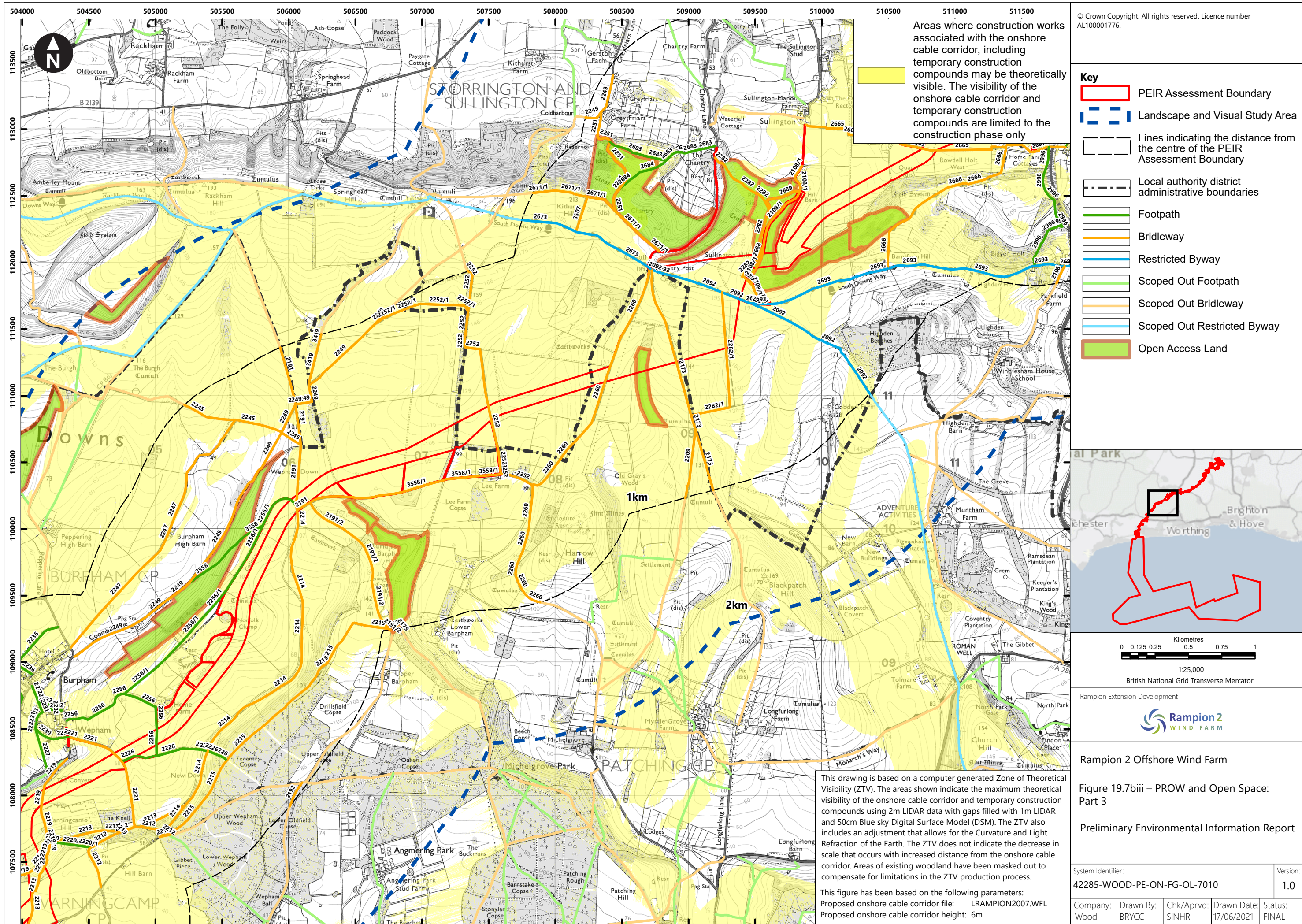
Rampion Extension Development
Rampion 2
WIND FARM

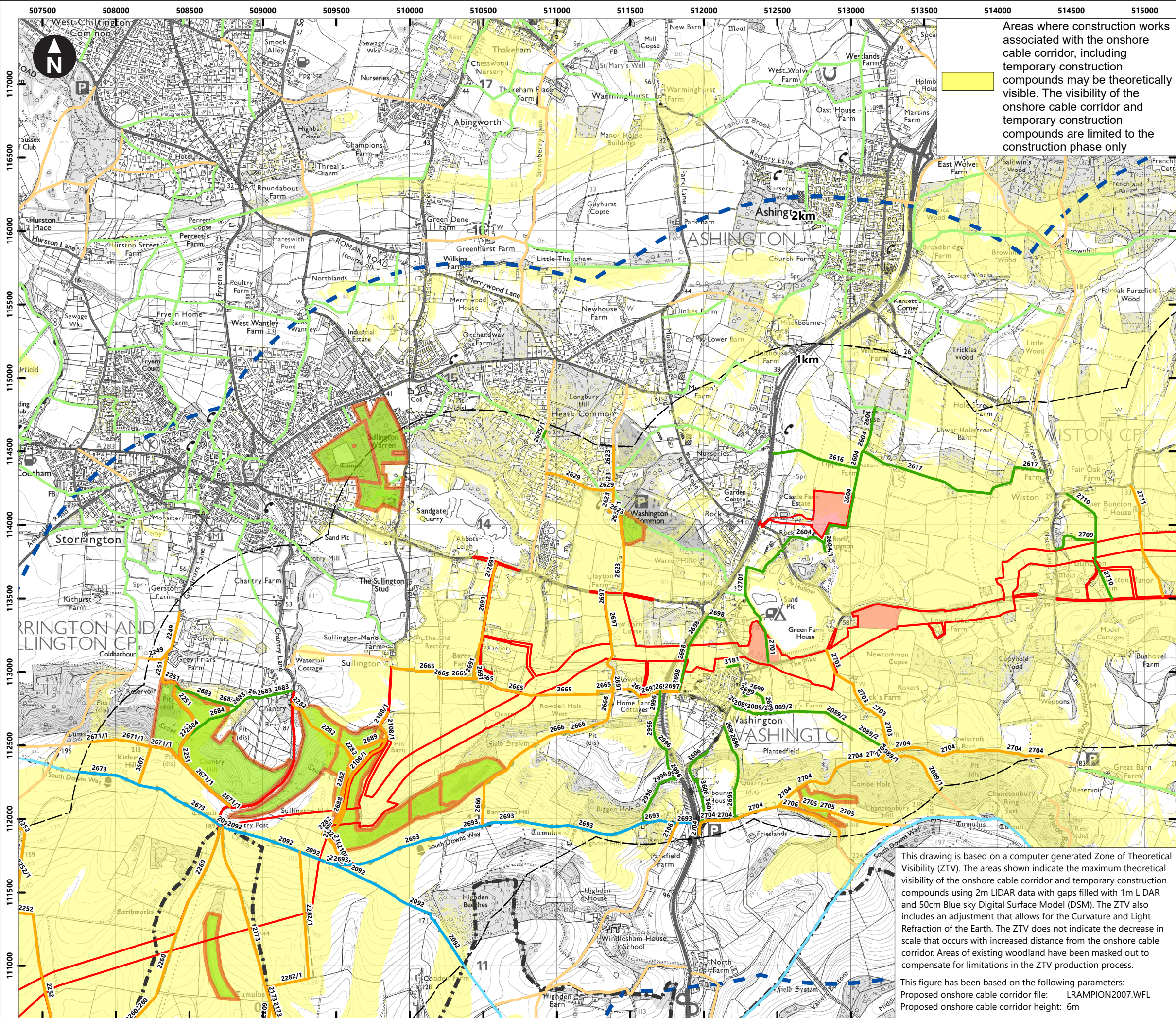
Rampion 2 Offshore Wind Farm
Figure 19.7bii – PROW and Open Space:
Part 2
Preliminary Environmental Information Report

System Identifier: 42285-WOOD-PE-ON-FG-OL-7010				Version: 1.0
Company: Wood	Drawn By: BRYCC	Chk/Prvrd: SINHR	Drawn Date: 17/06/2021	Status: FINAL

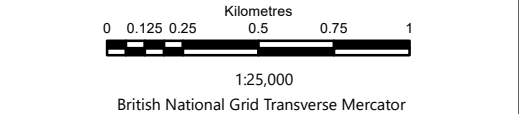
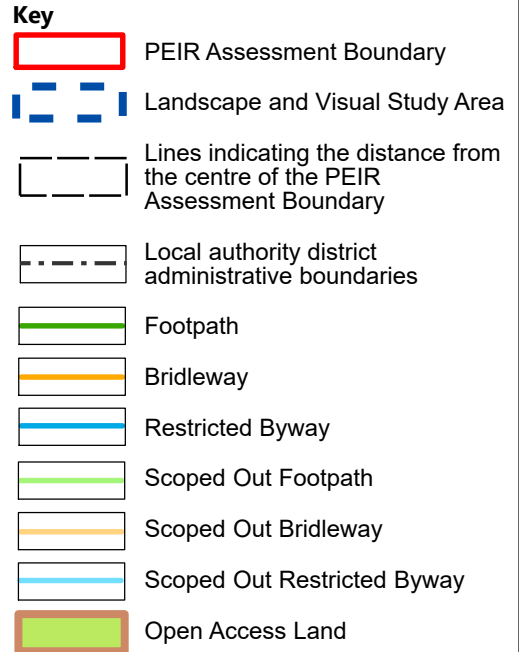
This drawing is based on a computer generated Zone of Theoretical Visibility (ZTV). The areas shown indicate the maximum theoretical visibility of the onshore cable corridor and temporary construction compounds using 2m LIDAR data with gaps filled with 1m LIDAR and 50cm Blue sky Digital Surface Model (DSM). The ZTV also includes an adjustment that allows for the Curvature and Light Refraction of the Earth. The ZTV does not indicate the decrease in scale that occurs with increased distance from the onshore cable corridor. Areas of existing woodland have been masked out to compensate for limitations in the ZTV production process.

This figure has been based on the following parameters:
Proposed onshore cable corridor file: LRAMPION2007.WFL
Proposed onshore cable corridor height: 6m





© Crown Copyright. All rights reserved. Licence number AL100001776.



Rampion Extension Development

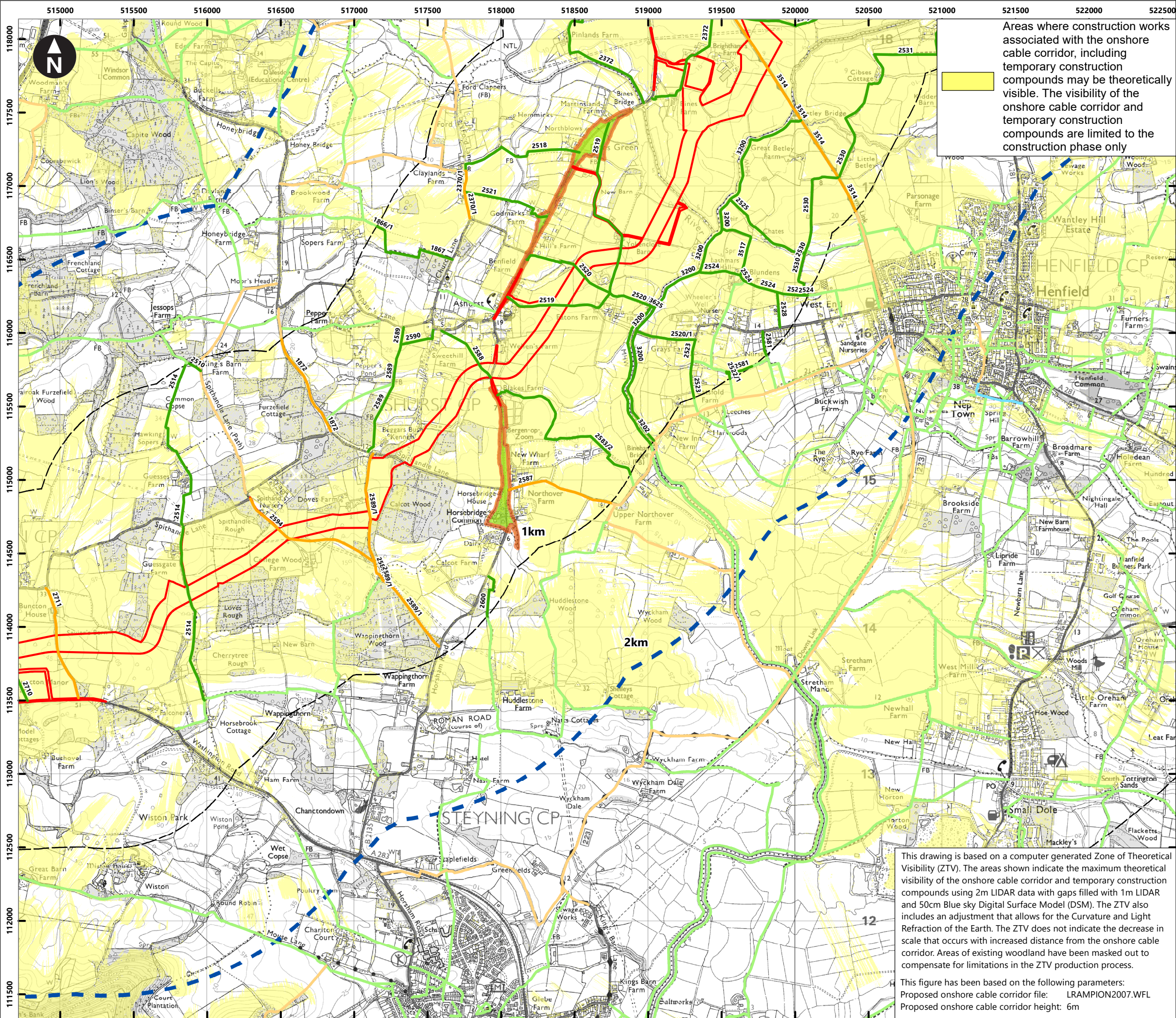
Rampion 2
WIND FARM

Rampion 2 Offshore Wind Farm

Figure 19.7biv – PROW and Open Space
Part 4

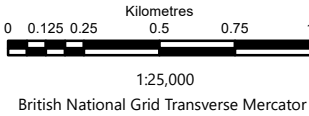
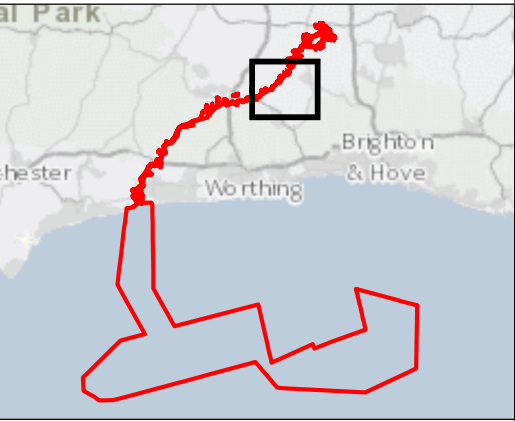
Preliminary Environmental Information Report

System Identifier: 42285-WOOD-PE-ON-FG-OL-7010				Version: 1.0
Company: Wood	Drawn By: BRYCC	Chk/Prvrd: SINHR	Drawn Date: 17/06/2021	Status: FINAL



© Crown Copyright. All rights reserved. Licence number AL100001776.

- Key**
- PEIR Assessment Boundary
 - Landscape and Visual Study Area
 - Lines indicating the distance from the centre of the PEIR Assessment Boundary
 - Local authority district administrative boundaries
 - Footpath
 - Bridleway
 - Scoped Out Footpath
 - Scoped Out Bridleway
 - Scoped Out Restricted Byway
 - Open Access Land



Rampion Extension Development

Rampion 2
WIND FARM

Rampion 2 Offshore Wind Farm

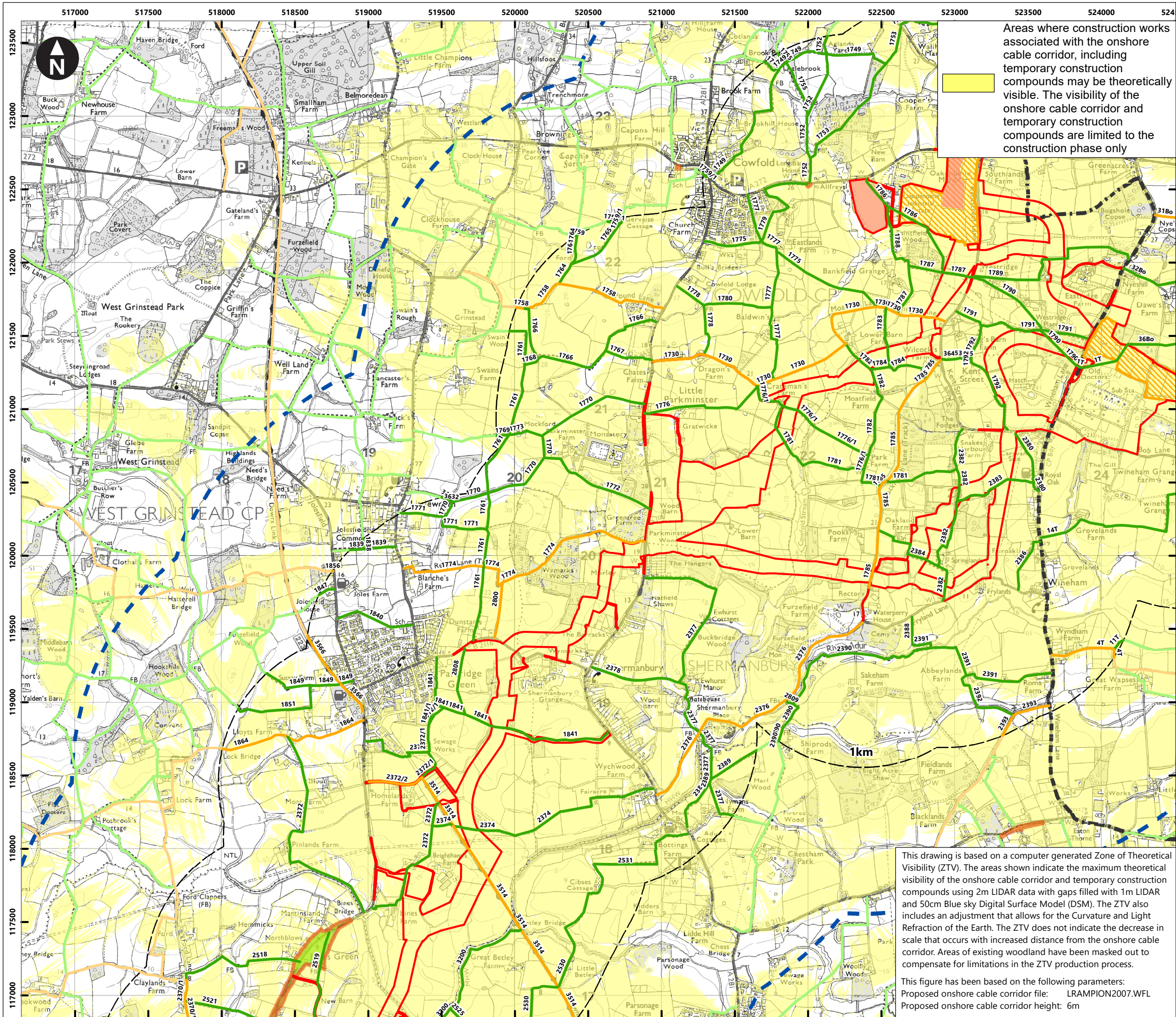
Figure 19.7bv – PROW and Open Space
Part 5

Preliminary Environmental Information Report

System Identifier: 42285-WOOD-PE-ON-FG-OL-7010				Version: 1.0
Company: Wood	Drawn By: BRYCC	Chk/Prvd: SINHR	Drawn Date: 17/06/2021	Status: FINAL

This drawing is based on a computer generated Zone of Theoretical Visibility (ZTV). The areas shown indicate the maximum theoretical visibility of the onshore cable corridor and temporary construction compounds using 2m LIDAR data with gaps filled with 1m LIDAR and 50cm Blue sky Digital Surface Model (DSM). The ZTV also includes an adjustment that allows for the Curvature and Light Refraction of the Earth. The ZTV does not indicate the decrease in scale that occurs with increased distance from the onshore cable corridor. Areas of existing woodland have been masked out to compensate for limitations in the ZTV production process.

This figure has been based on the following parameters:
Proposed onshore cable corridor file: LRAMPION2007.WFL
Proposed onshore cable corridor height: 6m



© Crown Copyright. All rights reserved. Licence number AL100001776.

Key

- PEIR Assessment Boundary
- Onshore substation search areas
- Landscape and Visual Study Area
- Lines indicating the distance from the centre of the PEIR Assessment Boundary
- Local authority district administrative boundaries
- Footpath
- Bridleway
- Scoped Out Footpath
- Scoped Out Bridleway
- Open Access Land

0 0.125 0.25 0.5 0.75 1
Kilometres
1:25,000
British National Grid Transverse Mercator

Rampion Extension Development

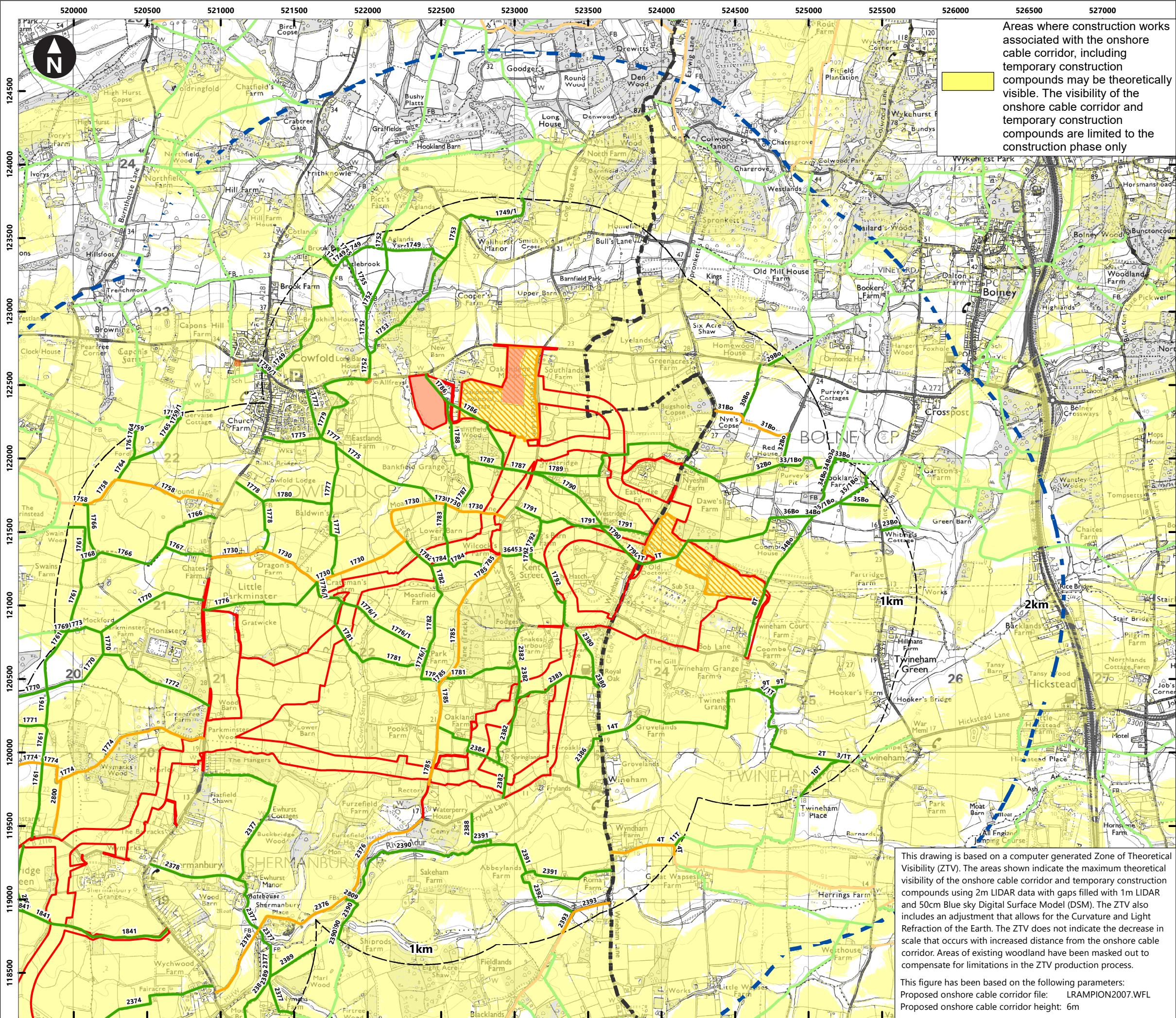
Rampion 2
WIND FARM

Rampion 2 Offshore Wind Farm

Figure 19.7biv – PROW and Open Space
Part 6

Preliminary Environmental Information Report

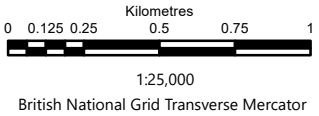
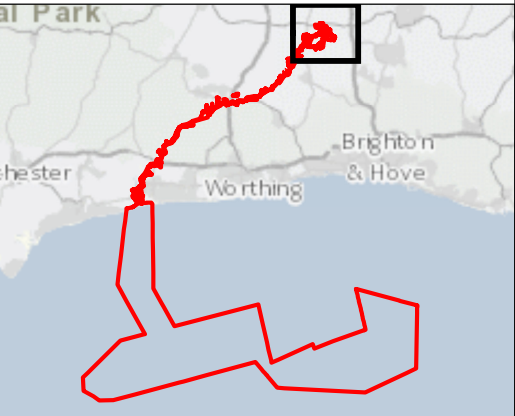
System Identifier: 42285-WOOD-PE-ON-FG-OL-7010		Version: 1.0
Company: Wood	Drawn By: BRYCC	Chk/Prvrd: SINHR
Drawn Date: 17/06/2021	Status: FINAL	



Areas where construction works associated with the onshore cable corridor, including temporary construction compounds may be theoretically visible. The visibility of the onshore cable corridor and temporary construction compounds are limited to the construction phase only

© Crown Copyright. All rights reserved. Licence number AL100001776.

- Key**
- PEIR Assessment Boundary
 - Onshore substation search areas
 - Landscape and Visual Study Area
 - Lines indicating the distance from the centre of the PEIR Assessment Boundary
 - Local authority district administrative boundaries
 - Footpath
 - Bridleway
 - Scoped Out Footpath
 - Scoped Out Bridleway
 - Open Access Land



Rampion Extension Development

Rampion 2
WIND FARM

Rampion 2 Offshore Wind Farm

Figure 19.7bvii – PROW and Open Space Part 7

Preliminary Environmental Information Report

This drawing is based on a computer generated Zone of Theoretical Visibility (ZTV). The areas shown indicate the maximum theoretical visibility of the onshore cable corridor and temporary construction compounds using 2m LIDAR data with gaps filled with 1m LIDAR and 50cm Blue sky Digital Surface Model (DSM). The ZTV also includes an adjustment that allows for the Curvature and Light Refraction of the Earth. The ZTV does not indicate the decrease in scale that occurs with increased distance from the onshore cable corridor. Areas of existing woodland have been masked out to compensate for limitations in the ZTV production process.

This figure has been based on the following parameters:
Proposed onshore cable corridor file: LRAMPION2007.WFL
Proposed onshore cable corridor height: 6m