

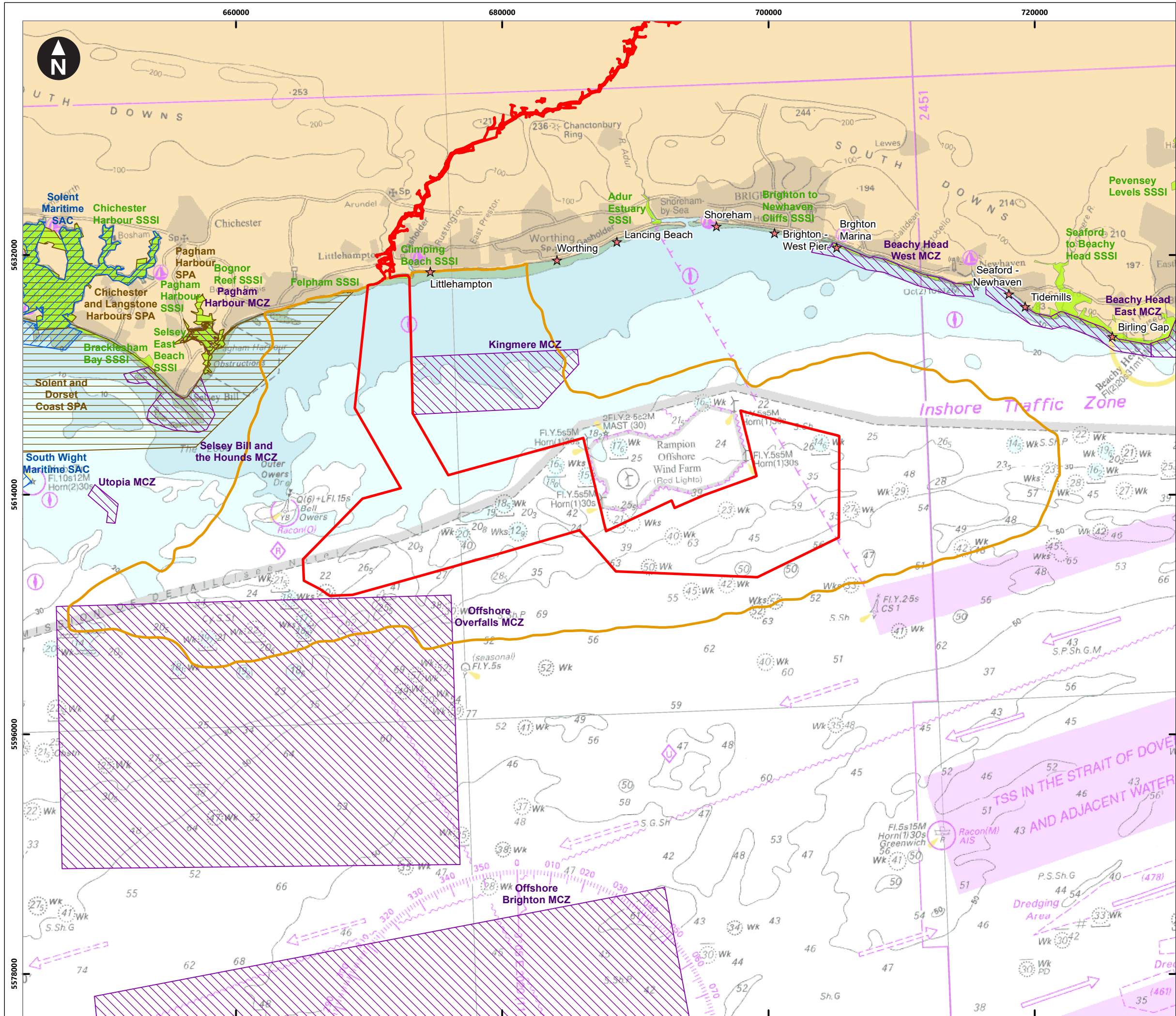
Volume 3, Chapter 6

Coastal Processes Figures



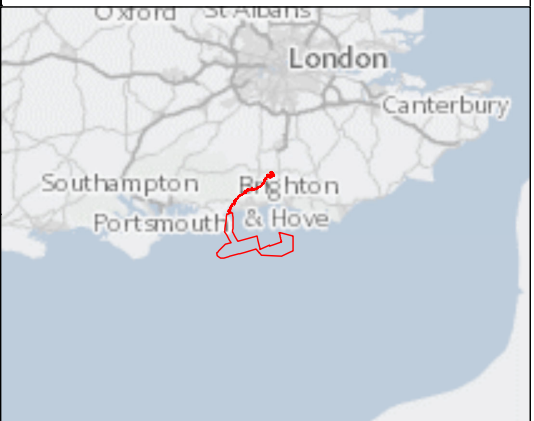
Contents

Figure 6.1	Study Area
Figure 6.2	Designated Sites
Figure 6.3	Landfall
Figure 6.4	Percentage difference in 50 percent no exceedance significant wave height (scheme minus baseline as a proportion of baseline values) for the three identified operational phase MDS layouts (includes Rampion 1, as built layout)
Figure 6.5	Projects considered within the Cumulative Effects Assessment



Service Layer Credits: Contains OS data © Crown Copyright and database right 2020. © British Crown and OceanWise, 2021. All rights reserved.
License No. EMS-EK001-643956. Not to be used for Navigation. © Natural England copyright. Contains Ordnance Survey data © Crown copyright and database right 2020. Contains public sector information licensed under the Open Government Licence v3.0.
© ABPmer, All rights reserved, 2021.

- Key**
- PEIR Assessment Boundary
 - Spring tidal excursion buffer
 - Special Area of Conservation
 - Special Protection Area
 - Marine Conservation Zone
 - Site of Special Scientific Interest
 - Surfing beaches

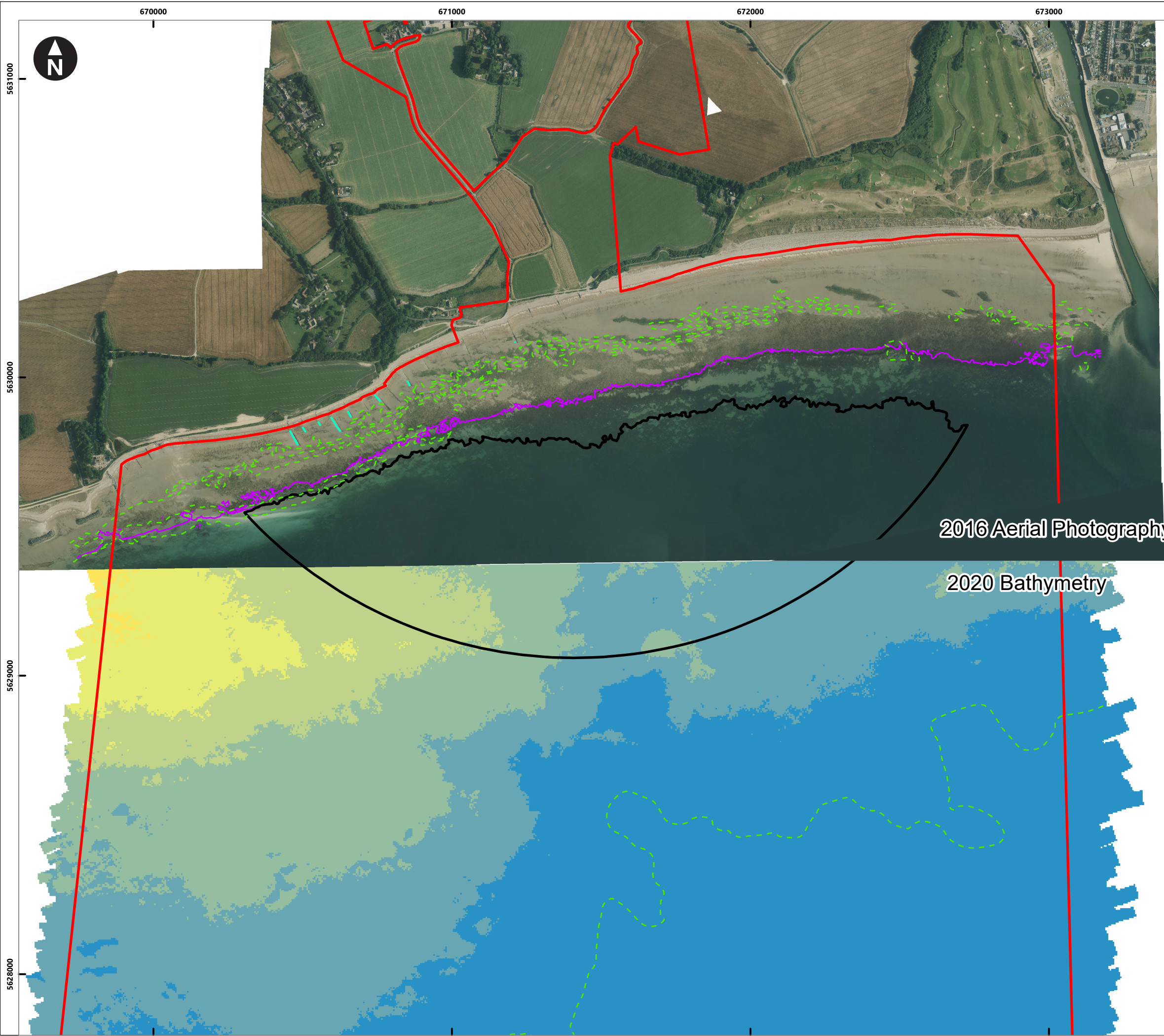


0 1.5 3 6 9 12
Kilometres
1:275,000
WGS 1984 UTM Zone 30N Transverse Mercator

Rampion Extension Development
Rampion 2
WIND FARM

Rampion 2 Offshore Wind Farm
Figure 6.2 Designated sites
Preliminary Environmental Information Report

System Identifier: 42285-GOBE-PE-OF-FG-O4-1948				Version: 1.0
Company: ABPmer	Drawn By: CRB	Chk/Prvrd: DLW	Drawn Date: 30/06/2021	Status: FINAL



Imagery courtesy of Channel Coastal Observatory, 2016; Osiris (2020c).
© ABPmer, All rights reserved, 2021.

Key

- Horizontal Directional Drilling exit
- Horizontal Directional Drilling exit
- Mean Low Water Springs (0.4m)
- Mean Low Water Springs (0.4m)

Water depth (m Lowest Astronomical Tide)

< -2.5	-0.5 to 0
-2.5 to -2	0 to 0.5
-2 to -1.5	0.5 to 1
-1.5 to -1	1 to 1.5
-1 to to 0.5	1.5 to 2

0 0.075 0.15 0.3 0.45 0.6
Kilometres
1:12,500
WGS 1984 UTM Zone 30N Transverse Mercator

Rampion Extension Development

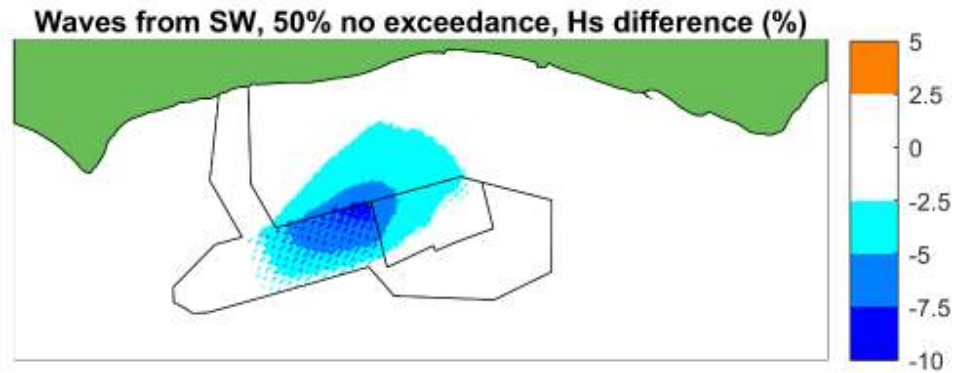
Rampion 2 Offshore Wind Farm

Figure 6.3 Landfall

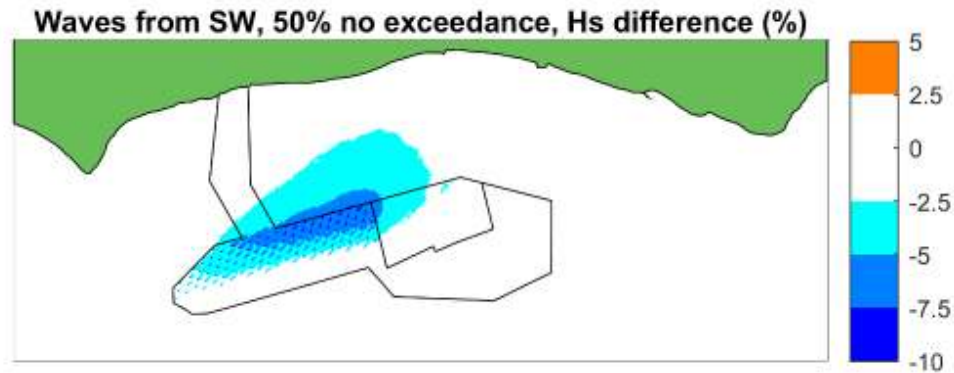
Preliminary Environmental Information Report

System Identifier: 42285-GOBE-PE-OF-FG-O4-8691				Version: 1.0
Company: ABPmer	Drawn By: DLW	Chk/Aprvd: CRB	Drawn Date: 30/06/2021	Status: FINAL

MDS Layout 1



MDS Layout 2



MDS Layout 3

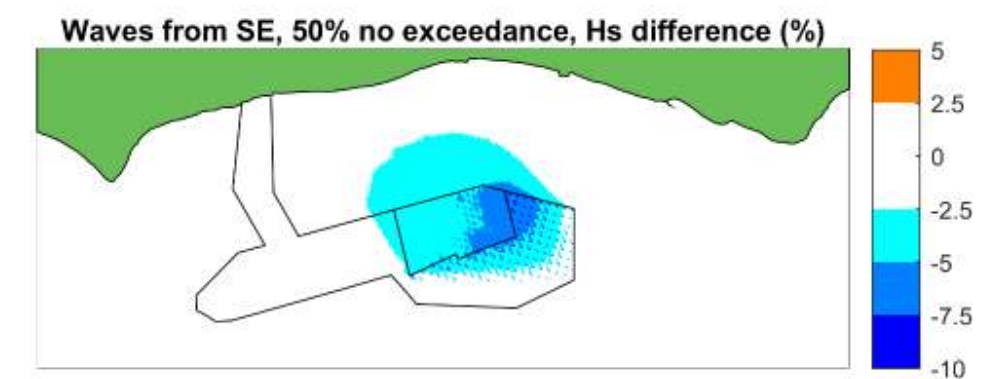
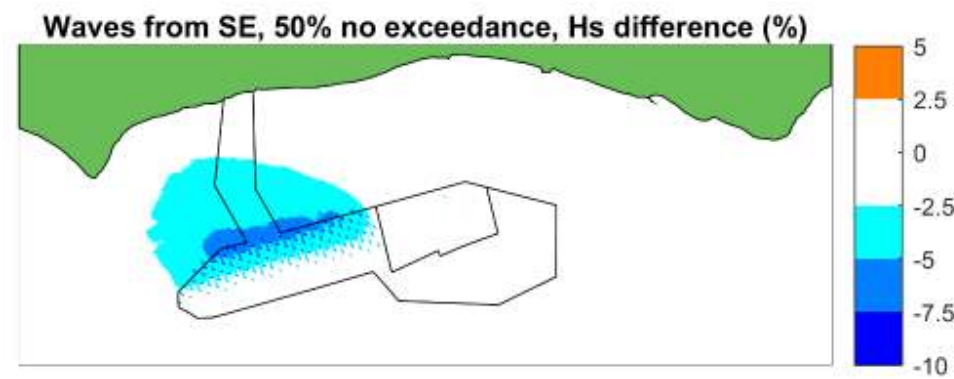
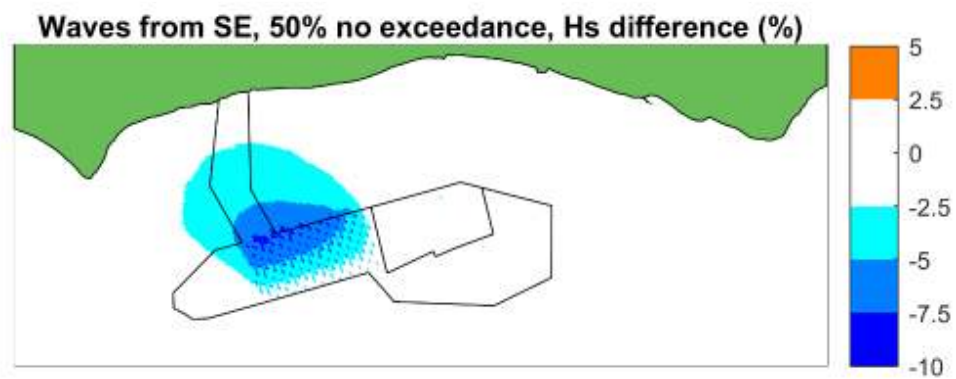
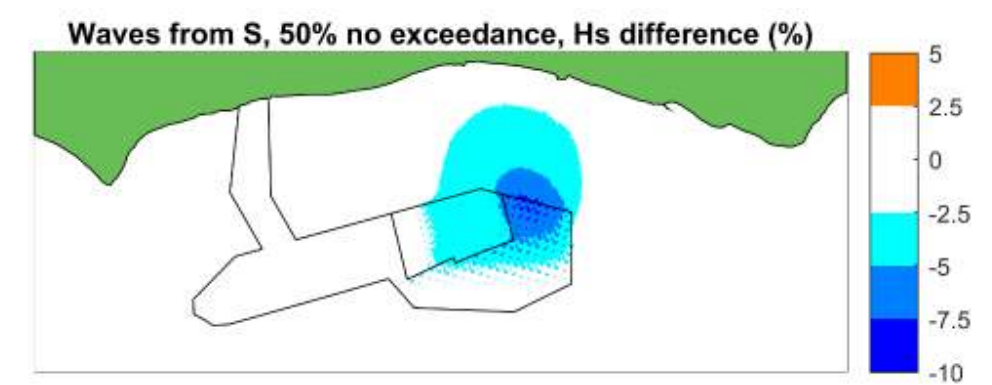
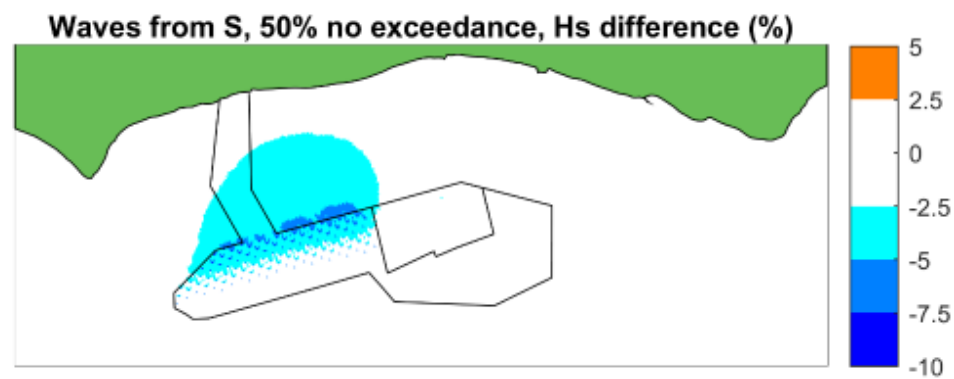
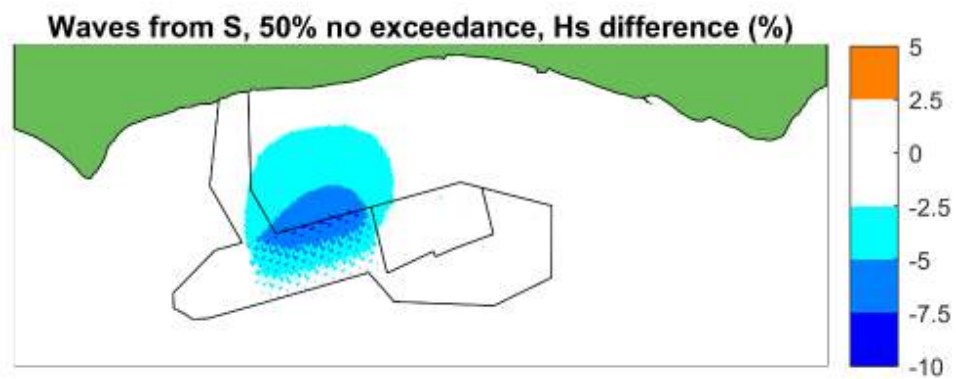
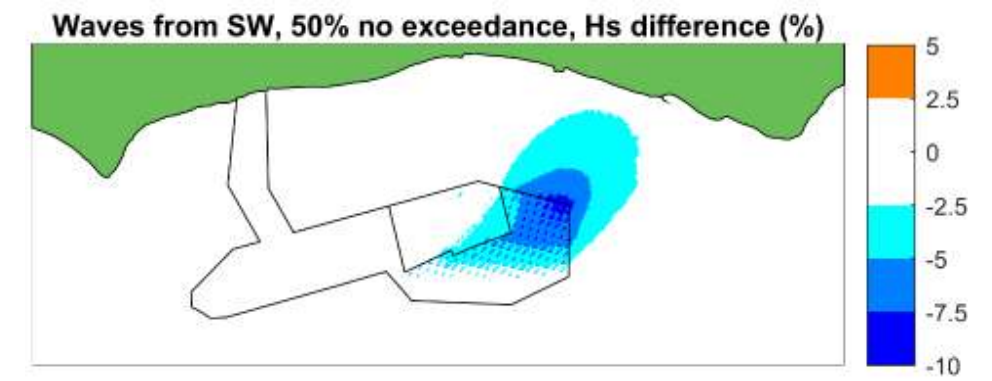
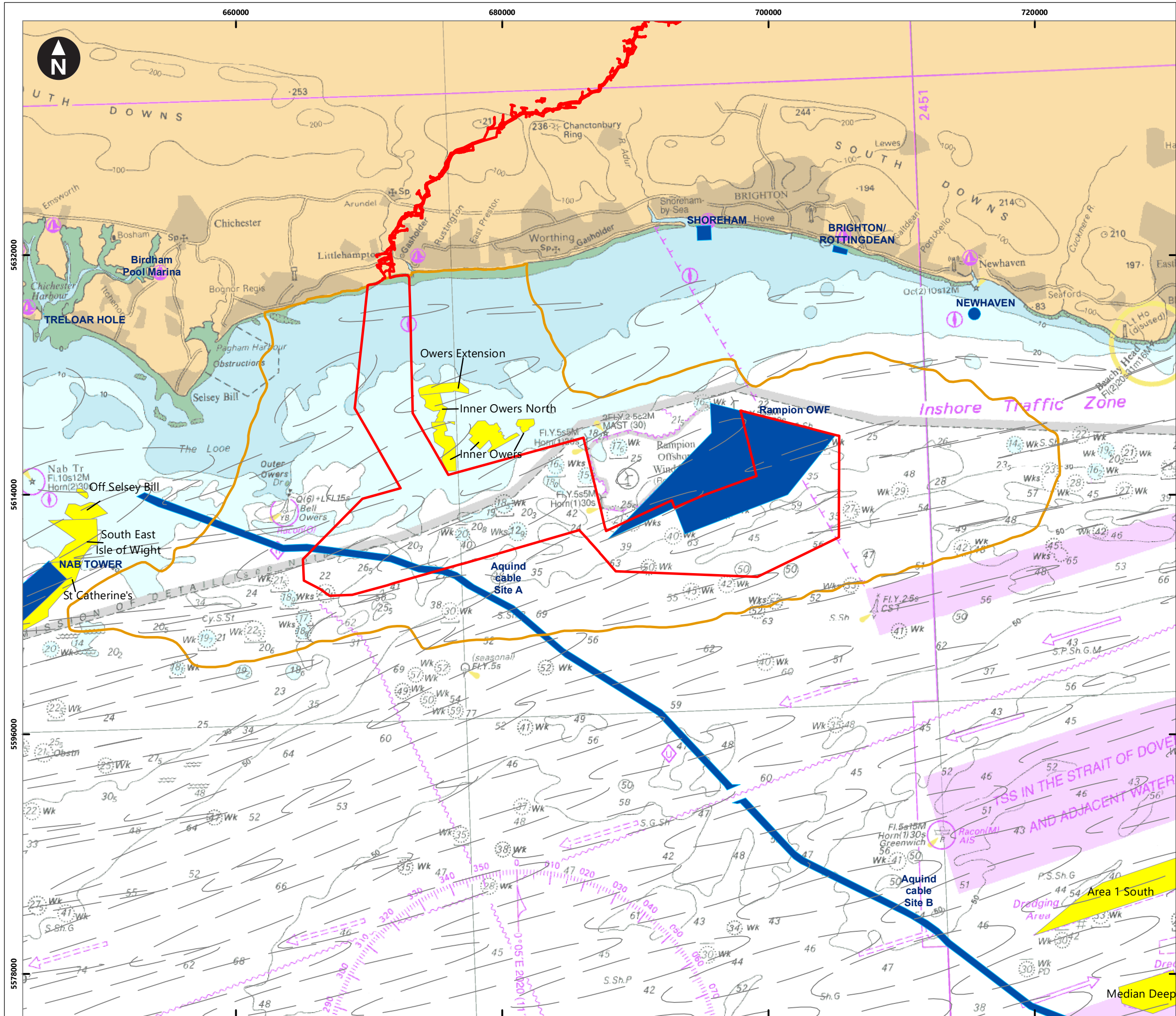


Figure 6.4 Percentage difference in 50 percent no exceedance significant wave height (scheme minus baseline as a proportion of baseline values) for the three identified operational phase MDS layouts (includes Rampion 1, as built layout)



© British Crown and OceanWise, 2021. All rights reserved. License No. EMS-EK001-643956. Not to be used for Navigation.
© The Crown Estate, 2020; Cefas 2021.
ABPmer Renewables Atlas © Crown Copyright. All rights reserved 2008.
© ABPmer, All rights reserved, 2021.

Key

- PEIR Assessment Boundary
- Spring tidal excursion ellipses
- Spring tidal excursion buffer
- Aggregates site agreements
- Dredge disposal sites

0 1.5 3 6 9 12 Kilometres
1:275,000
WGS 1984 UTM Zone 30N Transverse Mercator

Rampion Extension Development

Rampion 2
WIND FARM

Rampion 2 Offshore Wind Farm

Figure 6.5 Projects considered within the Cumulative Effects Assessment

Preliminary Environmental Information Report

System Identifier: 42285-GOBE-PE-OF-FG-O4-5067
Version: 1.0

Company: ABPmer	Drawn By: DLW	Chk/Prvrd: CRB	Drawn Date: 30/06/2021	Status: FINAL
-----------------	---------------	----------------	------------------------	---------------