

Updated Statement of Community Consultation



CONTENTS

CONTENTS	2
Introduction	3
Purpose of the Updated Statement of Community Consultation	3
The Planning Process	6
The Planning Act 2008 and Consultation	7
Environmental Impact Assessment	8
The Proposed Rampion 2 Wind Farm	10
About us.....	10
Background to Rampion 2	10
Rampion 2 proposals	11
Our approach to community consultation	12
Background	12
Principles of community consultation.....	13
Second round of statutory community consultation timeline	15
What will be consulted on.....	15
Who we will consult in the community.....	15
The consultation zone for the second round of statutory community consultation.....	16
Publicising the second round of statutory community consultation	18
Removing barriers to participation	19
The consultation arrangements	20
Information to be provided to consultees	20
Methods for delivering the second round of statutory community consultation	22
Public Events Timetable.....	23
Using feedback to inform Rampion 2 proposals	24
Collecting consultation responses.....	24
The Consultation Report.....	24
Contact us	26

Table of Figures

Figure 1: The planning process	9
Figure 2: Rampion 2 Wind Farm Components	11
Figure 3: Targeted consultation zone	16
Figure 4: Our methods of promoting consultation	18
Figure 5: Our methods of removing barriers to participation	19
Figure 6: The consultation documents	21

Introduction

Purpose of the Updated Statement of Community Consultation

Our Updated ‘Statement of Community Consultation’ (Updated SoCC) describes how we, Rampion Extension Development Limited, intend to consult about the proposed Rampion 2 project. Reading our Updated SoCC will help inform you about our formal public consultation on Rampion 2. This Updated SoCC has been provided to explain how we will consult the public during further statutory community consultation on the proposed Rampion 2 project.

Having reviewed consultation feedback from local communities, landowners and other statutory consultees, we are investigating alternative or modified cable routes, alternative accesses and different locations for trenchless crossings. These potential alternatives have been identified in response to requests or comments made, and issues raised, during the statutory consultation that took place between 14 July and 16 September 2021 and reopened between 7 February and 11 April 2022, through continued other stakeholder engagement, and as a result of our further engineering and environmental assessments.

Some of these potential alternatives are comparatively straightforward, such as allowing the option to move the onshore cable route from one side of a field to the other. Others are more complex, and they may have different impacts on landowners, communities or the environment. Further changes propose new locations for works within the area we previously consulted on. Whilst each potential change is localised, there are a number of such changes along the cable route. However, the principle of cable route construction remains the same. The cables will be laid underground for the entire length of the route, using a combination of the ‘open cut trench and backfill’ method, or a ‘trenchless’ methodology.

The purpose of this further statutory consultation is to ensure that local communities, groups and landowners with an interest in the potential alternatives and new locations for works can review and comment on these and our proposed mitigation. We are seeking specific feedback to allow us to consider the proposed changes and whether we should incorporate them in our project. This may also result in removing other areas from our original proposed boundary before we make our final Development Consent Order (DCO) Application to the Secretary of State (SoS).

This Updated SoCC proposes refined methods of consultation to reflect the focus of the second statutory community consultation exercise being solely on the onshore cable route. We are not inviting feedback on the original cable route and associated works that were the subject of the first round of statutory consultation, as this has already been considered when identifying the potential alternatives being presented as part of this second round of statutory consultation.

Elements of the proposals which are newly presented for consultation will be visually presented and clearly described in the consultation materials.

Having considered feedback received from previous consultation and engagement, in combination with further studies and assessment, we have selected a preferred onshore substation location which will not be subject to this further consultation. Comments and issues raised as part of further consultation on the onshore cable route will be considered alongside previously received consultation feedback before making final decisions on our proposals.

We have been considering feedback from our previous public consultation and have been meeting with various statutory consultees in respect of our offshore proposals, such as; the Marine Management Organisation (MMO), the Maritime and Coastguard Agency (MCA), Natural England, the South Downs National Park Authority (SDNPA), Cefas, Sussex Wildlife Trust, Sussex Inshore Fisheries and Conservation Authorities (IFCA) to assess opportunities for reducing impact and improving these proposals. This work is ongoing and is not the subject of the second statutory consultation. However, once our DCO application is submitted anyone will be able to review and respond to the proposals via the Planning Inspectorate. This Updated SoCC has been prepared in accordance with section 47 of the Planning Act 2008 and explains how we will consult the local community ahead of applying for a Development Consent Order (DCO) to build the project. Amongst other matters, this document sets out:

- When we will consult;
- The information that will be made available;
- Who we will consult;
- The methods we will use to reach communities and gather their views and;
- How we will take into account the feedback received in shaping the proposals

As part of the preparation and finalising of the Updated SoCC, we requested feedback from the following local authorities **who are potentially affected by onshore proposals**¹:

- Arun District Council
- Horsham District Council
- Mid Sussex District Council
- South Downs National Park Authority
- West Sussex County Council

In addition, we requested feedback from the following authorities and organisations ²:

- East Sussex County Council
- Adur District Council
- Worthing Borough Council
- Chichester District Council
- Brighton and Hove City Council
- Eastbourne Borough Council
- Lewes District Council
- Isle of Wight Council
- Wealden District Council
- Marine Management Organisation

¹ S43(1) Consultees as prescribed in the Planning Act 2008
<https://www.legislation.gov.uk/ukpga/2008/29/section/43>

² For consistency, the same authorities have been contacted for the previous proposals that were consulted on and the more limited geographical extent of the changes that are the purpose of this updated SoCC

The Planning Process

Rampion 2 is classified as a Nationally Significant Infrastructure Project (NSIP) under the Planning Act 2008. This means that we must apply to the Secretary of State (SoS) for Business, Energy and Industrial Strategy (BEIS) for a Development Consent Order (DCO) which will permit us to build the project. It is our intention to submit this application in early 2023.

We will submit the DCO application to the Planning Inspectorate who will only accept the application on behalf of the SoS for examination if it complies with the relevant statutory formalities and standards. The Planning Inspectorate will consult with the local authorities on the adequacy of our consultation.

Once the application is accepted for examination, we are required to carry out further publicity in relation to the scheme. Interested parties will then be able to register their interest in the application with The Planning Inspectorate who will assess the application in an examination on behalf of the SoS for BEIS.

During the examination of the application interested parties will be able to submit written comments on the proposals and participate in the public hearings. Following the examination, the Planning Inspectorate will make a recommendation to the SoS who will then decide whether or not to grant a DCO.

Further information about the DCO application and examination process is available on the Planning Inspectorate website at <https://infrastructure.planninginspectorate.gov.uk/> or by calling them on 0303 444 5000.

The Planning Act 2008 and Consultation

DCOs are governed by a statutory process which requires us to consult in accordance with the Planning Act 2008, in particular including provisions such as:

- **Section 42 (duty to consult)** This section requires us to consult certain organisations, people and categories of people about the proposed application. The consultees include certain local authorities, persons with rights over land and other prescribed persons.
- **Section 47 (duty to consult local community)** - This section requires us to prepare and publish a statement (the “Statement of Community Consultation”) setting out how we propose to consult local people about the proposed application. We must consult with the relevant local authorities before publishing such a statement, and the local authorities must reply within 28 days. The consultation must then be carried out in accordance with the SoCC. This SoCC has been produced following such consultation.
- **Section 48 (duty to publicise)** - This section requires us to publicise the proposed application, in national and local press and to specify a deadline for consultation responses to be received.

In early 2021 we undertook non-statutory consultation, where we held a number of meetings with specialists from statutory bodies and representative community organisations. Having consulted on a proposed SoCC, we then undertook consultation in 2021 (July-September) in relation to our project proposals to meet the above requirements – this is known as statutory consultation. We extended the consultation in early 2022 when we became aware that some coastal residents did not receive consultation information leaflets as intended. We then wrote directly to the coastal addresses which were omitted to provide them opportunity to respond to consultation. Virtual events were also offered during the reopened consultation.

We are now at the stage in developing our proposals where we will consult again to meet the above in relation to the potential alternatives to our onshore cable route. We will then use the feedback that we receive to help us refine our final proposals for Rampion 2 before submitting our DCO application.

As part of our DCO Application, we will submit a Consultation Report detailing our approach to consultation, the feedback that we receive, and how we have given due regard to all responses in finalising the proposals. When considering our DCO application, the SoS must consider whether the consultation that we have undertaken has been adequate and compliant with the statutory requirements.

It may be necessary to make further changes to the proposed project following the public consultation process. Should this be necessary, we will consider further targeted consultations beyond what is specified in this document, to help inform our decision on the final design of

the project. If further consultation is carried out, we will provide appropriate notification to relevant stakeholders who may be affected by the change(s) in question.

Environmental Impact Assessment

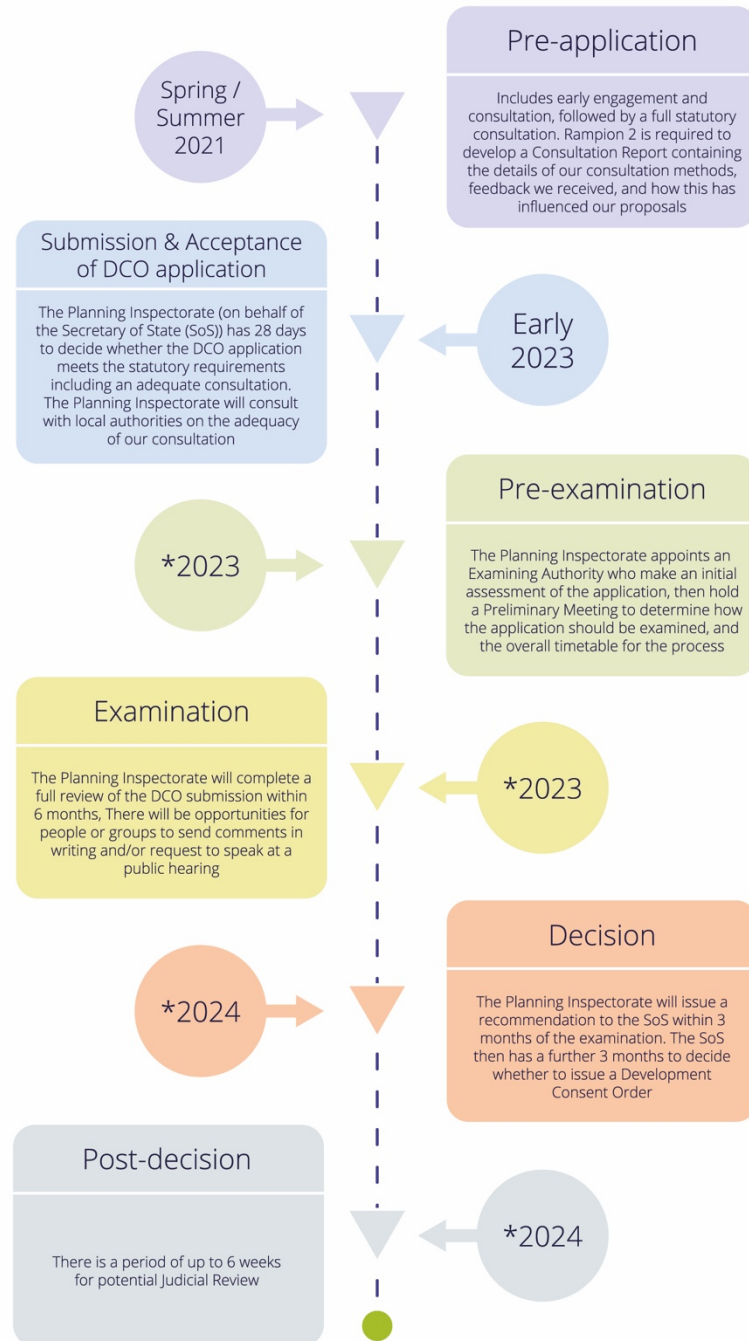
For the proposed Rampion 2, we are required to carry out an Environmental Impact Assessment (EIA) of our proposals. In legal terms, this means it is considered to be 'EIA development' for the purposes of the Infrastructure Planning (Environmental Impact Assessment) Regulations 2017.

We must assess the potential environmental impacts from our proposals and, where appropriate, propose mitigation or possible enhancement measures. We will report on this process in a document called an Environmental Statement ('ES') which will form part of the DCO application we submit. At the first statutory consultation stage, we shared and sought feedback on the preliminary results of our assessments, through a document referred to as the Preliminary Environmental Information Report (PEIR). During this second round of statutory consultation we will be sharing and seeking feedback on the preliminary results of our assessments in respect of the additional areas and changes to construction methods within the previously assessed area, through a Supplementary Information Report to the PEIR (the "PEIR SIR").

The timeline below outlines our indicative programme at the time of the publishing this Updated SoCC (dated October 2022). This may be subject to change to take account of additional feedback received if it results in further design development and/or consultation activities.

Figure 1: The planning process

Next steps



* We have estimated 15-18 months between DCO submissions and The Planning Inspectorate decision based the typical timeframe on previous NSIP projects

The Proposed Rampion 2 Wind Farm

About us

Rampion 2 is owned by a joint venture company called Rampion Extension Development Limited. The joint venture company comprises of: RWE, a Macquarie-led consortium (Macquarie European Infrastructure Fund 5, the Green Investment Group and the Universities Superannuation Scheme) and Enbridge (24.9%).

RWE is developing the project on behalf of the joint venture. RWE ranks among the largest global players in renewable power generation with a total installed generation capacity of 9 gigawatts and an additional 2.6 gigawatts under construction. The company specialises in onshore and offshore wind, utility-scale photovoltaic (PV) solar power and energy storage projects. RWE employs 3,600 renewables professionals who develop, build and operate large renewable energy assets in 15 countries across Europe, the Americas and Asia-Pacific. RWE's goal is to rapidly expand the use of renewable energy technologies that address the growing concern about energy security, energy affordability, and climate change.

Background to Rampion 2

Rampion 2 is a proposed expansion of the existing Rampion offshore wind farm located in the English Channel off the Sussex coast. The broad offshore area of search being reviewed for development is adjacent to the existing Rampion wind farm which was developed under The Crown Estate's third leasing Round of Offshore Wind. The Crown Estate own and lease the seabed.

Offshore wind is one of the most cost-effective means of reducing greenhouse gas emissions, and the UK Government has identified it as a key solution. The Government has set a target to deliver over a third of UK electricity from Offshore Wind by 2030, up from 10% today.

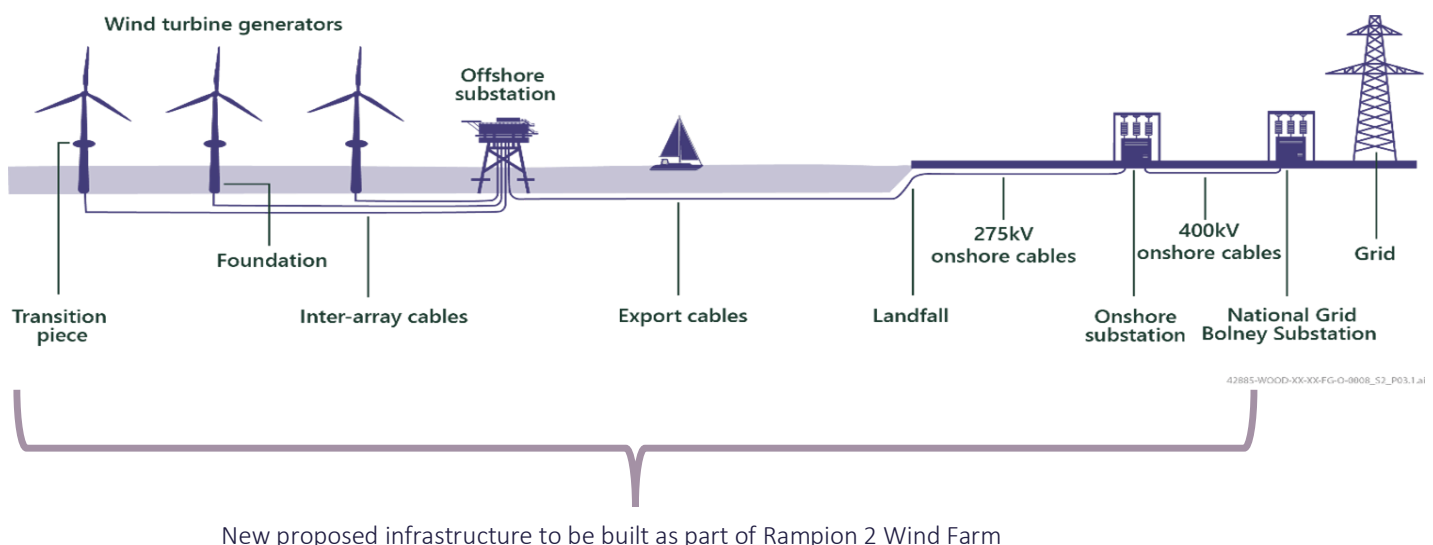
Rampion 2 will contribute to decarbonising the UK's power supplies in a significant way. To give you an idea; maximising the project's technical potential would enable Rampion 2 to meet the electricity needs of over 1 million homes and save 1.8 million tonnes of carbon dioxide per year (*based on an average annual domestic household electricity consumption of 3,618kWh – BEIS, Dec 2019*). The design will be optimized, chiefly based on environmental, economic and engineering factors; considering your views as members of the public as well as the views of other consultees.

Rampion 2 proposals

Infrastructure being proposed as part of the development includes:

- Up to 90 wind turbines, up to three offshore substations and an export cable search area to bring the power to shore at Climping Beach. Whilst we are still engaging with key bodies on this part of our project, we do not expect the need to undertake any further consultation before our consent application. However, anybody can review and comment on our DCO application when it is submitted.
- An underground electricity cable connection from Climping Beach to Bolney, Mid Sussex, where the electricity would feed into the National Grid transmission system. New elements of these proposals will be subject further consultation, as addressed in this Updated SoCC.
- One new substation located near the existing Bolney substation, which would be required to transform the power from the wind farm up to the required voltage (400kV), in order to connect to the transmission grid. Having conducted several months of further analysis and considered feedback received from previous consultation and engagement, we have selected a preferred onshore substation location. This will not be subject to this further consultation.

Figure 2: Rampion 2 Wind Farm Components



Our approach to community consultation

Background

We completed a non-statutory consultation exercise in February 2021. Its aim was to learn about local issues and constraints in order to refine our proposed onshore and offshore areas of search.

From 14 July to 16 September 2021, we held a statutory consultation in line with our previous SoCC, which reopened between 7 February to 11 April 2022 when we became aware that some coastal residents did not receive consultation leaflets as intended. We wrote directly to coastal addresses which were omitted to provide them an opportunity to respond to consultation.

This consultation sought feedback on our preliminary assessment of the onshore and offshore environmental, community and economic impacts and proposed measures to mitigate impacts. We also requested specific feedback to help develop our proposals including:

- Feedback on our early thinking on a construction methodology and the measures we would require of our contractors and sub-contractors to minimise any impacts of construction on local communities;
- Comments on the merits or disbenefits of substation and cable route alignment proposals where options were being considered.

Through the feedback and further work we have made a decision on the substation and are now doing a second statutory consultation on potential changes to the onshore cable route.

Scope of the second round of statutory community consultation

Rampion 2 is now seeking further feedback from local communities surrounding the onshore cable route in relation to a number of alternative options to the onshore cable route and associated works, including:

- Proposed changes to the onshore cable corridor. These changes affect additional areas of land and in some instances require consideration of effects outside of the area covered by our PEIR
- New locations where trenchless cable installation (including Horizontal Directional Drilling (HDD)) may be considered
- New routes proposed for construction and/or operational access.

We are not inviting feedback on the original cable route and associated works that were the subject of the first round of statutory consultation, as this has already been considered when identifying the potential alternatives being presented as part of this second round of statutory consultation.

Principles of community consultation

Our primary objective for the community consultation is to ensure that people and communities who feel that they are affected by the development have a chance to understand, comment and inform the proposals.

There are founding principles that apply to public consultation in the UK to ensure that project such as Rampion 2 undertake lawful consultations. These are known as The Gunning Principles and set out below:

- Principle #1: Consultation must take place when the proposal is still at a formative stage
- Principle #2: Sufficient reasons must be put forward for the proposal to allow for intelligent consideration and response
- Principle #3: Adequate time must be given for consideration and response
- Principle #4: The product of consultation must be conscientiously taken into account

The Rampion 2 community consultation will adhere to these principles by adopting the following key commitments:

<p>Gunning 1: Formative stage</p> <p>Our community consultation will be held ahead of finalising project designs and environmental assessments and will be subject to review and possible changes taking into account feedback received in consultation.</p>	<p>Gunning 2: Intelligent consideration</p> <p>Our consultation materials will include background information describing the design development process, and the purpose, benefits and impacts of the changes being proposed.</p>
<p>Gunning 3: Adequate time</p> <p>We will provide a two-week extension to the community consultation minimum statutory requirement of 28 days (4 weeks), to ensure that members of the community have adequate time to review our consultation documents, raise questions, ideas or concerns with the project team and submit a consultation response.</p>	<p>Gunning 4: Feedback taken into account</p> <p>We will collect and review all responses received and analyse key themes to identify opportunities to inform and improve our proposals. At the time of consultation launch, we will publish a document summarising our responses to key issues raised during the preceding consultation. The Statutory Consultation Report containing responses to issues raised from consultation will be part of the DCO application and be available at submission.</p>

In addition to these key principles, we are adopting the following objectives for our community consultation:

1. To reach out to and engage with people and groups from a wide range of demographics which reflect the large and diverse population surrounding the project area;
2. To be proportionate in our engagement efforts and awareness campaign – targeting those who live or work in the vicinity of the proposed changes, visitors and those who use the area for work, school and/or recreation;
3. To be transparent by:
 - a) Making communities aware of the proposals and keeping them informed throughout preapplication stage
 - b) Preparing communities for the consultation through early and ongoing engagement

- c) Making information available to those who responded to the consultation which sets out what we heard through the consultation and how input has informed our proposals

Second round of statutory community consultation timeline

The second round of statutory community consultation for Rampion 2 will take place over a six week time period (18th October to 29th November). As a minimum, we will publish statutory notices under s48 of the Planning Act 2008 promoting the dates of the consultation in the following newspapers:

- The Argus
- Isle of Wight Press
- West Sussex Gazette
- West Sussex County Times
- Sussex Express
- Fishing News
- London Gazette
- The Guardian
- Lloyds List

During this consultation period, the latest information about our proposals will be available to view and download www.Rampion2.com.

What will be consulted on

We encourage local communities to give their views about how the Rampion 2 proposals may affect them or their local area. We will be seeking specific feedback regarding the alternatives and our assessment of the environmental, community and economic impacts we've assessed in a Supplementary Information Report to the PEIR (PEIR SIR).

Who we will consult in the community

We will strive to reach out to all local communities and those who visit or work in the areas which may be affected by the proposed changes. We will carefully consider the views of members of the public who feel they have an interest in or will be impacted by the proposed changes to the Rampion 2 proposals. Our consultation will be accessible online to the public throughout the consultation period. For the second round of statutory consultation a proposed consultation zone and measures we will take in the wider area are explained below.

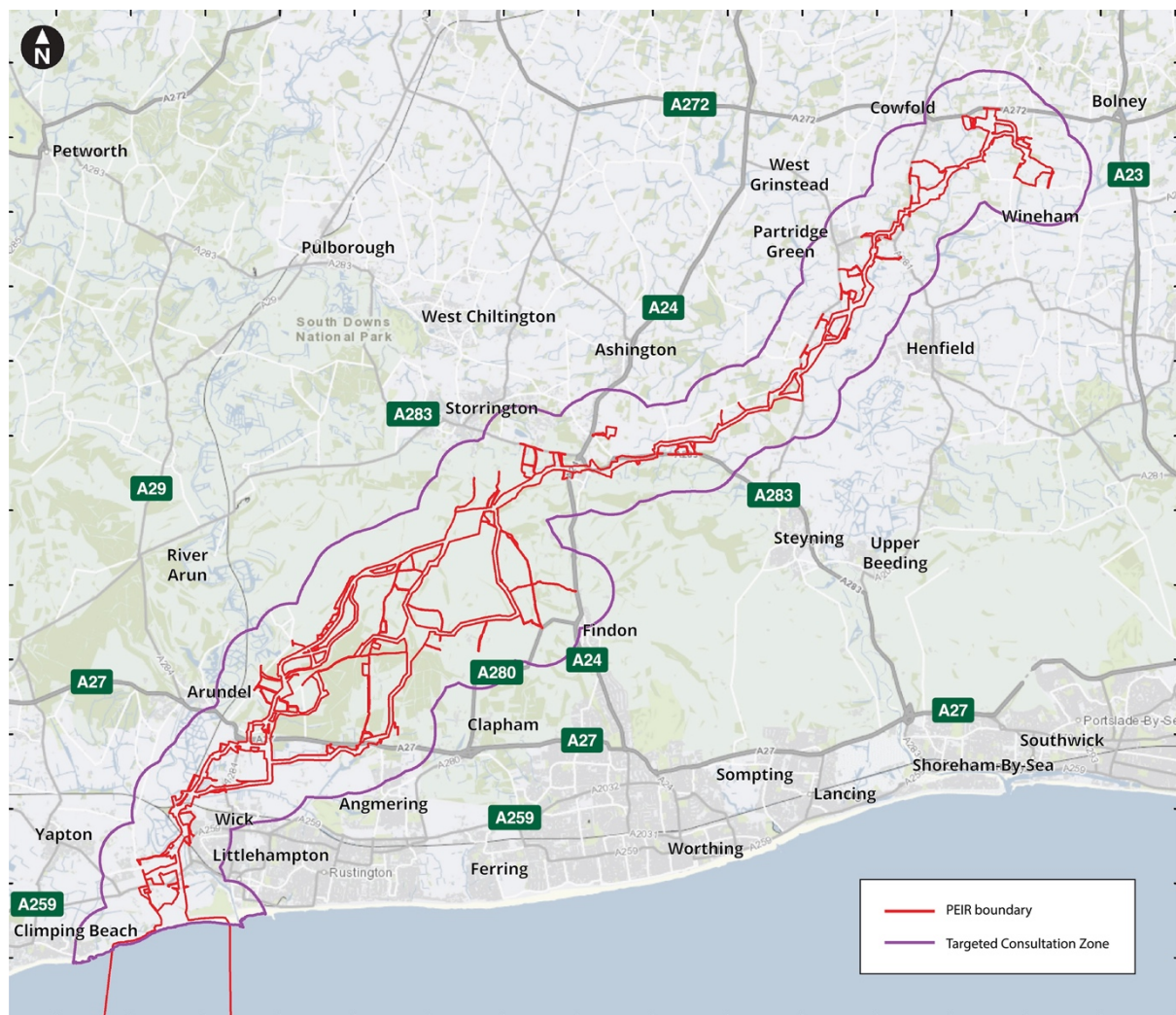
The consultation zone for the second round of statutory community consultation

In seeking feedback on the changes, we will focus our consultation on local communities living, working or visiting areas in close proximity to those proposed changes.

Targeted consultation zone

The targeted consultation zone includes persons or groups most likely to have a direct interest in or experience impacts from the onshore cable corridor and associated works. The zone is defined as those 1km either side of the previously defined PEIR boundary, within which some changes to construction methodology are proposed, plus the boundaries of the areas newly identified, which are the subject of this consultation. This zone extends along the onshore cable corridor between the landfall at Climping beach to the northern end of the proposed cable routes to the selected onshore substation.

Figure 3: Targeted Consultation Zone



Wider outreach area

The wider outreach area includes those persons or groups outside of the targeted consultation zone listed above, but who may have an interest in the local areas where potential alternatives are being proposed. The area is identified so as to capture and inform those persons or groups who may live, work or visit the communities along the onshore cable corridor for business or pleasure purposes, and representative interest groups within the local authority areas within which the onshore infrastructure is proposed.

Publicising the second round of statutory community consultation

We will use a range of techniques to maximise awareness of the proposed changes in the local communities that may be affected. These are designed to allow people with different needs in local communities to take part in the consultation in a way that is convenient to them.

Figure 4: Our methods of promoting consultation



Removing barriers to participation

It is important to ensure that consultation is all inclusive and enables participation from a wide range of audiences, including those who are seldom heard in public consultation such as young people and those for whom English is not a first language. We will do this by identifying the reasons why some people might not wish to or be able to engage with us and make every effort to remove their barriers to participation.

Figure 5: Our methods of removing barriers to participation

Potential barrier	Those who might experience this	How we plan to address it
No time to participate	<ul style="list-style-type: none"> Long or unusual working hours Managing various commitments Parents 	<ul style="list-style-type: none"> Consultation documents and response form will be made available 24/7 on our website We will offer opportunities for people to ask questions via email, website submission or freephone as well as multiple opportunities to attend virtual and face to face consultation events, some of which will be held in evenings / on Saturdays Consultation documents will be organised such that participants can easily direct their attention to the information that interests them most and at the level of detail they feel they require to provide intelligent consideration
Not aware of the project or consultation	<ul style="list-style-type: none"> Didn't see any advertisements Not linked to local civil groups or community networks Other things competing for your attention 	<ul style="list-style-type: none"> Use a variety of techniques for publicising the consultation, including traditional media, social media, and posters at places within communities where they are most likely to be seen Engage with parishes whose communities are within or adjacent to the consultation zone to ensure we are reaching out to all local communities and publicising through the best channels
Don't believe participating will make any difference	<ul style="list-style-type: none"> Had a bad experience with similar projects, the planning system or politics in the past Those who wish to understand the proposals by speaking face-to-face with the project team 	<ul style="list-style-type: none"> Describe in our consultation where feedback from consultees has influenced the proposals being consulted on Communicate in our consultation the methodologies we use to minimise construction disturbance to local communities Provide the opportunity for those with concerns to speak to members of the project team so that we may understand their perspective and learn from their experiences
Not able to understand the proposals or consultation materials	<ul style="list-style-type: none"> Do not speak English as a first language or have a lower literacy level Information is too technical to be understood by the average person 	<ul style="list-style-type: none"> Identify local cultural and religious groups and contact them ahead of consultation to ensure that our approach best meets the needs of its members and ask them to disseminate information and encourage participation Provide the opportunity to request project materials in different languages or in Easy Read format Ensure that consultation documents are written in plain English and that we supplement technical concepts with visual aids (videos, graphics, diagrams, etc)
Not able to access information	<ul style="list-style-type: none"> Anyone with a disability Those that have slow internet speeds, limited or no access to a computer, or difficulty navigating complex websites 	<ul style="list-style-type: none"> Identify local groups that represent persons with disabilities and contact them ahead of the consultation to ensure that our approach best meets the needs of its members and ask them to disseminate information and encourage participation Provide the opportunity to request project materials in different formats (e.g. large print, or audio) Ensure that consultation documents are written in plain English and are easy to navigate and download from our website, and that we supplement technical concepts with visual aids (videos, graphics, diagrams, etc)

The consultation arrangements

We will use a range of techniques to consult the community. These are designed to allow people with different needs to take part in the consultation in a way that is convenient to them while complying with any Government guidance on COVID-19 that may be issued from time to time. For the second round of statutory community consultation, we will take account of the expected enduring reduction in COVID-19 restrictions, enabling more in-person engagement. These expected arrangements are set out below.

Information to be provided to consultees

To ensure that communities have sufficient project and background material to enable informed consideration of and feedback on our proposals, we will prepare a number of documents, maps and plans showing the nature and location of the changes being consulted on.

Figure 6: The consultation documents

Consultation Document	Description
Supplementary Information Report to the Preliminary Environmental Information Report (PEIR)	The PEIR provides information on the likely significant environmental effects of the proposed development and was produced for consultation in July 2021. A Supplementary Information Report to the PEIR will be presented as part of this consultation, outlining our preliminary assessment of impacts to the potential changes we are consulting on. As preliminary reports, they are not final but provided at this stage to allow consultees to consider our current understanding of the potential impacts of the project. Further detailed information will be provided in the Environmental Statement that will accompany the application for development consent.
Consultation booklet	Information about the additional areas being assessed to determine potential changes along the onshore cable corridor between the landfall at Climping Beach and the connection to the National Grid near Bolney. Each change presented will include a visual depicting the previous proposal and additional area being consulted on, describing the reasons we are considering a potential change. We will also present information about the project and onshore cable route to inform feedback about the changes being consulted on, including <ul style="list-style-type: none"> - Introduction to Consultation - Background to Rampion 2 - Consents Process - Onshore Construction Methodologies and Managing Impacts
Videos	An introductory video which describes what is being consulted on and how people can have their say, as well as an informational video demonstrating the process for reinstating land following construction of the onshore cable route.
Consultation response form	A form for respondents to express their views on the changes and submit to the project team for consideration. Consultation responses will also be accepted via email and mail.

These consultation materials will be presented on our website www.Rampion2.com. Every effort will be taken to ensure the information is accessible to participants with all levels of digital proficiency, by ensuring the navigation to documents is clear and intuitive and is functional for those who have lower internet speeds or lack IT knowledge. Additionally, all consultation documents will be available in PDF versions, which can be downloaded directly from the website or requested by emailing us at rampion2@rwe.com or calling our freephone

telephone line 0800 2800 886 (Freephone line hours of operation 7am-9pm Monday to Saturday).

We encourage people and groups to review the consultation documents in digital format, but we will accept requests for hard copies of consultation materials via phone or email, which will be managed on a case-by-case basis. Where reasonable and depending on the specific consultation document(s) requested, we may charge a fee for printing and mailing.

Methods for delivering the second round of statutory community consultation

Website

A dedicated website will be available to find out more information about the project and latest proposals at www.Rampion2.com. The website will be updated with our second round of statutory consultation documents, including links to the PEIR SIR, a consultation booklet which outlines our proposed alternatives grouped by location that describe the technical changes being assessed, and video content. Links to the other documents previously consulted on, such as the PEIR, Non-Technical Summary (NTS) Vol 1 of the PEIR and all other consultation documents presented in the former consultation will remain available for those who wish to learn about background information. The aim of this platform is to provide a wide-reaching way of engaging with anyone interested in the project. And the ability to be kept informed upon request.

Virtual public forum - 15th November 18:00 to 19:30

Open to the public to allow people to ask questions about the changes directly to members of the project team. Attendees can expect an explanation of our latest onshore proposals and ask questions online during the session.

There will be opportunity to submit questions to the team using a Q&A tool. We will also invite attendees to submit questions that they would like the project team to address in advance of the virtual public forum. Information about the virtual public forum will be promoted on our website, through email and on social media.

Events - face to face drop in events

Where people will be able to view our targeted consultation proposals, talk to our project team in person and ask questions. All dates and/or venues are subject to change, although comparable venues, days and times will be sought where possible.

Public Events Timetable

Arundel Town Hall, Atherely Chamber, Maltravers St, Arundel BN18 9AP	Tuesday 1 November 1:00pm - 8:00pm
Arun Yacht Club, Rope Walk Riverside West, Rope Walk, Littlehampton BN17 5DL	Wednesday 2 November 1:00pm – 8:00pm
Ashurst Village Hall, The Street, Ashurst, Steyning BN44 3AP	Friday 11 November 1:00pm - 8:00pm
Washington Village Hall, School Lane, Washington, RH20 4AP	Saturday 12 November 1:00pm - 8:00pm

Hard copies will be available to view and the materials may also be inspected on computers accessible to the public at the following libraries during the consultation period from 18th October to 29th November 2022.

Venue	Address	opening hours
Ferring Library	The Street, Ferring, BN12 5HL	Monday, Tuesday, Thursday & Saturday 9:00am-1:00pm Wednesday & Friday 1:00pm-5:00pm
Littlehampton Library	Maltravers Road, Littlehampton, BN17 5NA	Monday - Friday 10:00am-6:00pm Saturday 10:00am-4:00pm
Bognor Regis Library	London Road, Bognor Regis, PO21 1DE	Monday - Friday 9:30am-6:00pm Saturday 9:30-5:00pm
Storrington Library	Ryecroft Lane, Storrington, RH20 4PA	Monday - Friday 9:00am-5:00pm Saturday 10:00am-4:00pm
Henfield Library	Off High Street, Henfield, BN5 9HN	Monday - Friday 10:00am-5:00pm
Arundel Library	Surrey Street, Arundel, BN18 9DT	Monday - Wednesday 1pm-5pm Thursday - Saturday 9am-1pm
Steyning Library	Church Street, Steyning, BN44 3YB	Monday - Friday - 10am-5pm Saturday - 10am-2pm

The above plans may be subject to change due to venue availability and other factors. Information and any relevant updates on the virtual public forum, events and libraries will be available on the project website.

Using feedback to inform Rampion 2 proposals

Collecting consultation responses

To capture participants' feedback, we will provide a consultation response form inviting comments. It will be made available on our website www.Rampion2.com alongside the consultation documents, but participants may also request fillable copies by email or a hard copy by mail. A freepost *return* address is available for us to receive written responses and hardcopy response forms.

The Consultation Report

Following the consultation, we will consider all the views that we receive and continue to develop our design for the proposed Rampion 2 ahead of submitting our DCO Application to the SoS. Our DCO application will include a Consultation Report setting out how we have had regard to all responses received.

Any comments received will be analysed and may be made available in due course to the SoS, the Planning Inspectorate and other relevant statutory authorities so that feedback can be considered as part of the DCO process. We will ensure that any personal details are not placed on public record, but held securely by Rampion Extension Development Ltd and its agents in accordance with the Data Protection Act 2018, the General Data Protection Regulation (GDPR) (relevant data protection laws) and will be used solely in connection with the consultation process and subsequent DCO application and, except as noted above, will not be passed to third parties.







Contact us

Our team is on hand to help with queries and help register your comments on the proposals for Rampion 2.

Email us at: rampion2@rwe.com

Call our freephone information line at: 0800 2800 886 (hours of operation 7am-9pm Monday to Saturday)

Freepost: Send your response form or comments to: FREEPOST: RAMPION 2

This freepost address is the only text needed on the envelope and no stamp is required.

Visit our website at: www.Rampion2.com

Follow us on Instagram @rampion2windfarm

Landowner interests

If you are a landowner, or have an interest in any of the land which interacts with our proposals, or if you have any questions relating to land interests in the area, please contact our appointed land agents Carter Jonas :

Call: 0121 794 6250

Email: rampion2@carterjonas.co.uk

A background image showing a coastal town with houses and buildings in the foreground, and a large wind farm with many turbines stretching across the horizon over the sea. The sky is blue with some clouds. A green wavy line separates the text area from the image.

If you would like this document in another language, large print, audio or braille formats, please contact us using the details above.